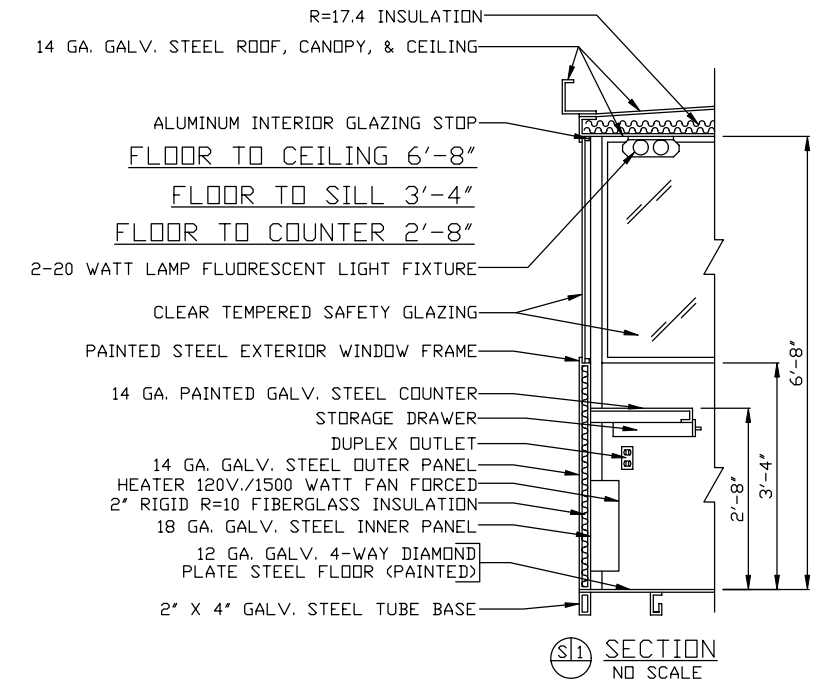
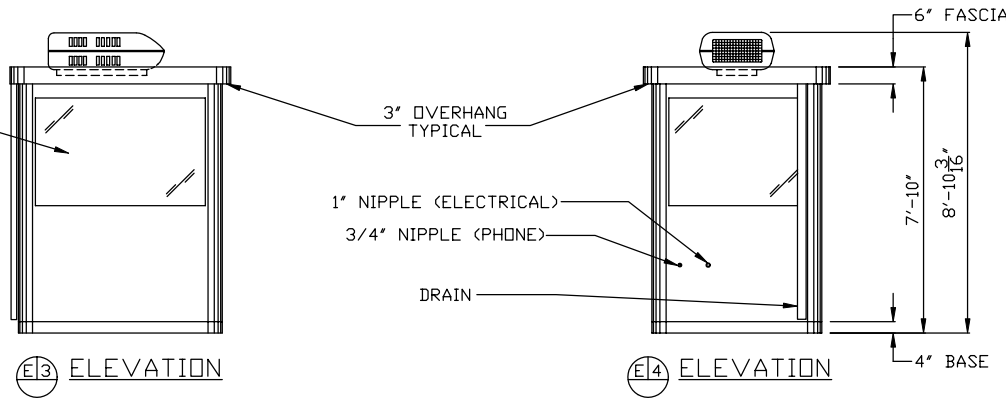
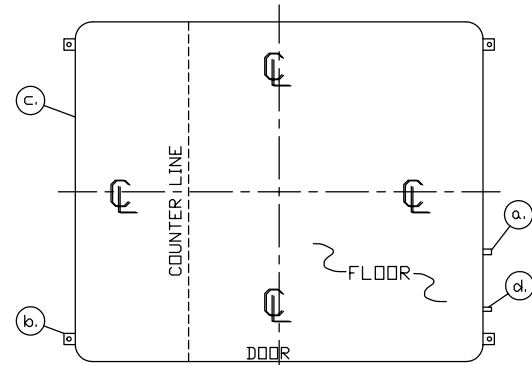


CLEAR TEMPERED SAFETY GLAZING TYPICAL



- a. NEW LOCATION 1" NIPPLE THROUGH WALL FOR ELECTRIC SERVICE ENTRANCE TO C.B. PANEL
- b. 2" X 2" X 1/4" MIN. ANCHOR CLIP WITH 3/4" ANCHOR BOLT HOLE, 4-REQ'D. AS SHOWN. ANCHOR BOOTH AFTER FINAL LOCATION. ANCHOR BOLTS NOT INCLUDED
- c. OUTER EDGE OF BASE
- d. 1" NIPPLE THROUGH WALL FOR TELEPHONE SERVICE

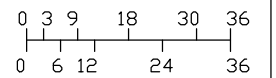
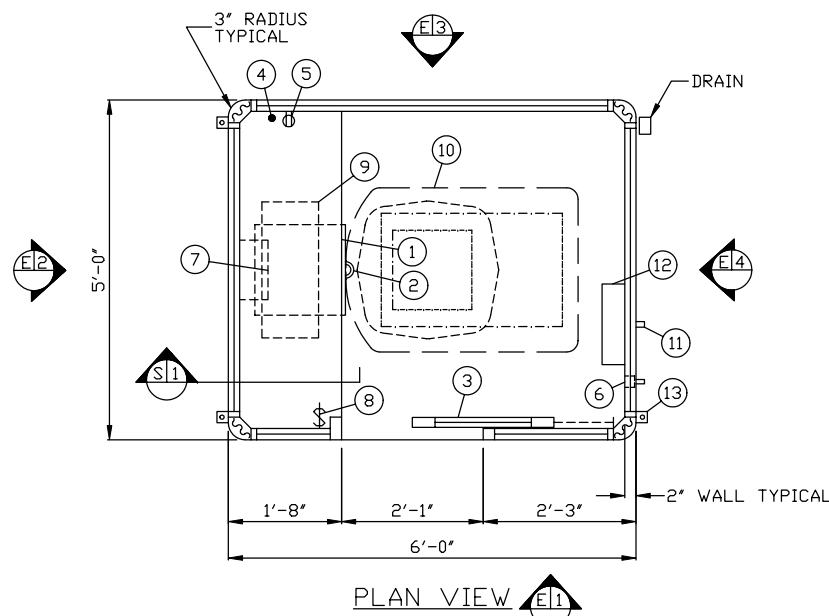


NOTE: PROVIDE 120/208V. 1Ø-3 WIRE SERVICE WITH GROUND. SERVICE ENTRANCE/ANCHOR BOLT LAYOUT

1. COUNTER- 18" DEEP PAINTED GALVANIZED STEEL 32" ABOVE FLOOR.
2. PAINTED STORAGE DRAWER BENEATH COUNTER.
3. DOOR- 25" WIDE, SLIDING STEEL WITH WEATHER-STRIPPING, BALL BEARING HANGERS, SAFETY GLAZING, HEAVY DUTY TRACK, BEST CYLINDER LOCK, & HARDWARE.
4. 1-1/4" HOLE IN COUNTER FOR DROP CORDS TO OUTLET.
5. DUPLEX OUTLET- MOUNTED BELOW COUNTER.
6. PHONE JACK PREPARATION WITH 3/4" NIPPLE THROUGH WALL FOR INCOMING CONNECTION.
7. HEATER- 120V./1,500 WATT FAN FORCED WITH INTEGRAL THERMOSTAT CONTROL.
8. LIGHT SWITCH BELOW COUNTER FOR INTERIOR LIGHT.
9. LIGHT- 2-20 WATT LAMP FLUORESCENT LIGHT FIXTURE WITH LENS.
10. AIR CONDITIONER- 120V./13,500 BTU ROOF MOUNTED WITH INTEGRAL THERMOSTAT CONTROL.
11. C.B. PANEL- 12 SPACE 120/208V. 1Ø-3 WIRE WITH GROUND BAR. 100 AMP MAIN BREAKER IS INCLUDED.
12. ANCHOR CLIP- 2" X 2" X 1/4" MIN. STEEL WELDED TO BASE AT GRADE WITH 3/4" ANCHOR BOLT HOLE. 4-REQ'D. ANCHOR BOOTH AFTER FINAL LOCATION. ANCHOR BOLTS NOT INCLUDED.

NOTE: PAR-KUT BOOTHS ARE OF SINGLE UNIT WELDED GALVANIZED STEEL CONSTRUCTION, FACTORY ASSEMBLED AND DELIVERED SET UP. FAILURE TO SECURELY ANCHOR BOOTH MAY RESULT IN OVERTURNING OF UNIT AND SERIOUS INJURY TO OCCUPANT.

- A. GLAZING TO BE CLEAR TEMPERED SAFETY GLAZING WITH PAINTED STEEL EXTERIOR WINDOWS FRAMES AND ALUMINUM INTERIOR GLAZING STOPS.
- B. PAINT- A RUST INHIBITIVE PRIMER WITH AN INDUSTRIAL FINISH.
- C. ELECTRICAL- ALL WIRING BY PAR-KUT TO BE #12(MIN) STRANDED COPPER, THHN ENCLOSED IN 1/2"(MIN) E.M.T. PER NATIONAL ELECTRICAL CODE. FITTINGS, FIXTURES & DEVICES ARE U.L. LABELED. ALL WIRING TO TERMINATE AT C.B. PANEL. ALL CIRCUITS HAVE GREEN GROUND WIRE.
- D. BOOTH WILL HAVE A 3" CANOPY OVERHANG ON ALL SIDES.
- E. LIFTING RING(S) ARE PROVIDED IN ROOF.
- F. NO ON SITE WORK BY PAR-KUT.



SCALE BAR  
NOTE: ELEVATIONS 2:1

CODE REFERENCES		NOTE: THIS PRINT AND DESIGN ARE THE PROPERTY OF PAR-KUT INTERNATIONAL, INC. IT MUST NOT BE REPRODUCED IN ANY MANNER, NOR SHALL IT BE SUBMITTED TO OUTSIDE PARTIES FOR EXAMINATION WITHOUT OUR CONSENT. IT SHALL BE USED ONLY AS A MEANS OF REFERENCE TO WORK DESIGNED AND FURNISHED BY PAR-KUT. PAR-KUT RESERVES THE RIGHT TO MAKE CHANGES TO DESIGN FOR ENGINEERING PURPOSES WITHOUT NOTICE. REVISIONS MAY NOT BE NOTED.	
1996 NATIONAL BUILDING CODE 1993 NATIONAL MECHANICAL CODE 1999 NATIONAL ELECTRICAL CODE 1995 CABO MODEL ENERGY CODE ALL WITH NJ AMENDMENTS DESIGN LOADS: ROOF LIVE- 30 PSF ROOF DEAD LOAD - 10 PSF SEISMIC - A <sub>0</sub> ≤0.2 FLOOR LIVE- 50 PSF WIND SPEED- 80 MPH WINTER DESIGN TEMP: +70F DESIGN CRITERIA: USE GROUP- B CONSTRUCTION TYPE- 2C		PAR-KUT INTERNATIONAL, INC. 40961 Production Drive Harrison Twp, Mich. 48045-1351 PH. (810) 468-2947	
A/E NOTES PAINT COLOR: REFERENCE S/N 97472 "TAN"		DWG# 2K469 SHEET A-1 BRISTOL MEYERS SQUIBB BUILDING 125 ENTRANCE NEW BRUNSWICK, NJ	
PD# VERBAL SCALE NTS DATE 8-29-2000 CHK'D BY:	DRAWN BY AJP SIZE 5' X 6' SALES REPRESENTATIVE TOM DUEMLING	REVISED 5-4-2001 DLT QTY 1	