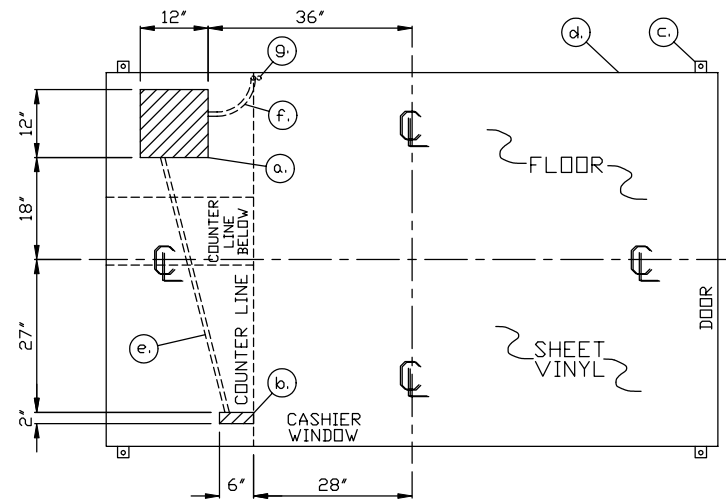


- a. 12" X 12" SLOT WITH HINGED COVER IN FLOOR FOR ELECTRIC SERVICE ENTRANCE
- b. 2" X 6" SLOT IN FLOOR FOR SERVICE ENTRANCE AND RACEWAY
- c. 2" X 2" X 1/4" MIN. ANCHOR CLIP WITH 3/4" ANCHOR BOLT HOLE, 4-REQ'D. AS SHOWN. ANCHOR BOOTH AFTER FINAL LOCATION. ANCHOR BOLTS NOT INCLUDED
- d. OUTER EDGE OF BASE
- e. 3/4" CONDUIT FROM SLOT TO SLOT FOR OPEN/CLOSE SWITCH.
- f. 3/4" CONDUIT FROM SLOT TO STUB ABOVE ROOF.
- g. 3/4" CONDUIT FROM C.B. PANEL TO STUB ABOVE ROOF.

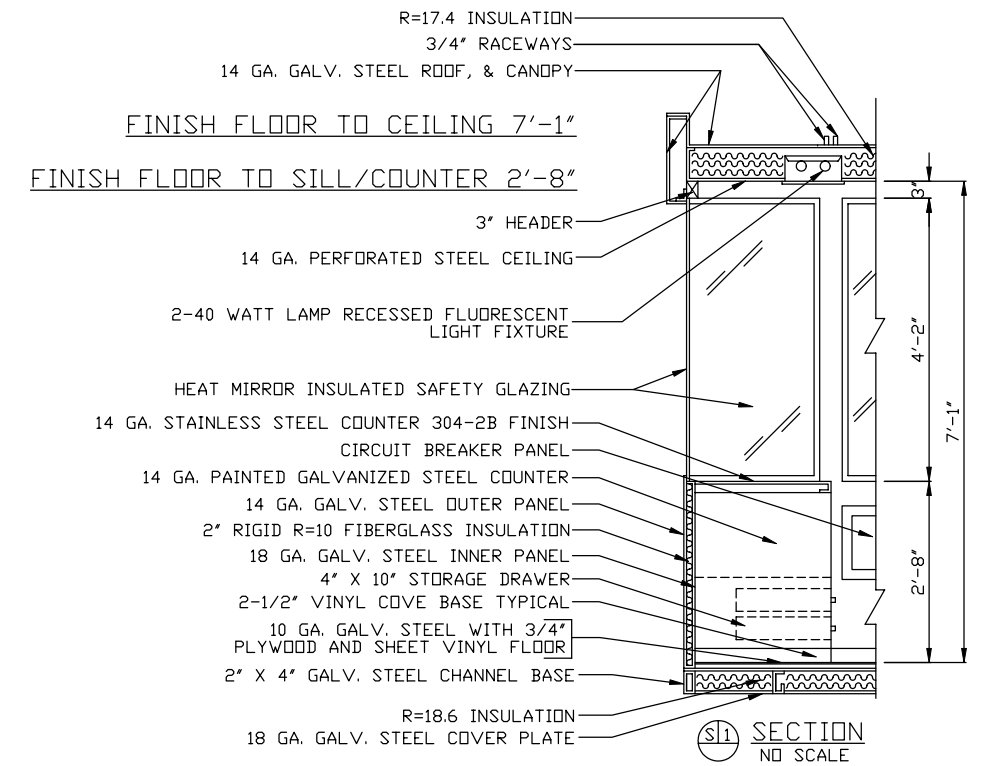


NOTE: PROVIDE 120/240V. 1Ø-3 WIRE SERVICE WITH GROUND. SERVICE ENTRANCE/ANCHOR BOLT LAYOUT

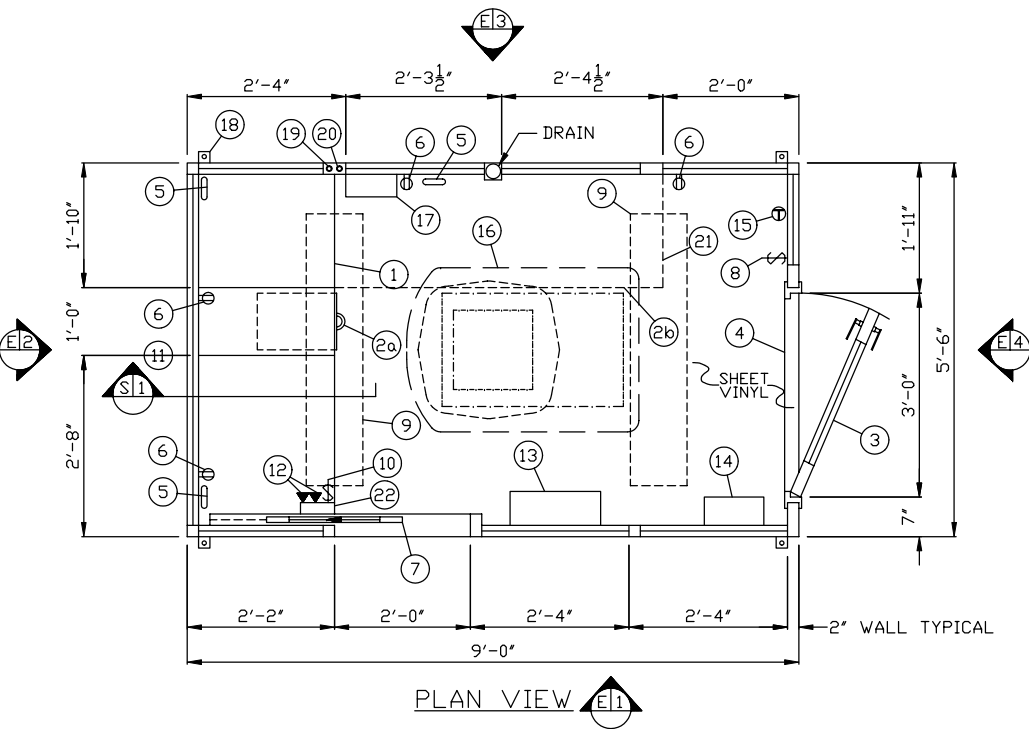
1. COUNTER- 22" DEEP STAINLESS STEEL 304-2B FINISH.
- 2a. PAINTED STORAGE DRAWER 4" HIGH X 10" WIDE BENEATH LOWER COUNTER, 2-REQ'D.
- 2b. PAINTED STORAGE DRAWER 4" HIGH X 16" WIDE BENEATH REMOVABLE COUNTER, 4-REQ'D.
3. DOOR- 36" WIDE, SWINGING STEEL WITH WEATHER-STRIPPING, BALL BEARING BUTTS, SAFETY GLAZING, HYDRAULIC CLOSER, BEST LEVER HANDLE LOCK 35H WITH 626D FINISH, & HARDWARE.
4. THRESHOLD- STAINLESS STEEL PAR-KUT PROVIDED AND INSTALLED ON SITE BY OTHERS.
5. 1" X 4" SLOT IN COUNTER FOR DROP CORDS, 2-REQ'D.
6. DUPLEX OUTLET MOUNTED BELOW COUNTER HEIGHT, 4-REQ'D.
7. 24" TOP HUNG SUSPENDED SIDE SLIDING ALUMINUM CASHIER WINDOW.
8. LIGHT SWITCH FOR INTERIOR LIGHTS.
9. LIGHT- 2-40 WATT LAMP FLUORESCENT LIGHT FIXTURE WITH ACRYLIC LENS AND BATTERY PACKS, 2-REQ'D.
10. SWITCH FOR OPEN/CLOSED SIGN.
11. OPEN/CLOSED INDICATOR MOUNTED TO FASCIA.
12. DUPLEX RJ-45 JACK MOUNTED ON POST CHASE WITH PULL CHAIN AND RACEWAY IN BASE TO MAIN FLOOR SLOT, 2-REQ'D.
13. 8" X 16" DEEP FEE DISPLAY SHELF AT WINDOW SILL FOR FUTURE FEE DISPLAY BY OTHERS.
14. HEATER- 120V./1,500 WATT FAN FORCED WITH INTEGRAL THERMOSTAT CONTROL.
15. WALL MOUNTED THERMOSTAT CONTROL FOR AIR CONDITIONER.
16. AIR CONDITIONER 120V./15,000 BTU COOL AND 1,500 HEAT STRIP ROOF MOUNTED WITH WALL MOUNTED THERMOSTAT CONTROL.
17. C.B. PANEL- 120/240V. 1Ø-3 WIRE WITH GROUND BAR. MAIN BREAKER IS NOT INCLUDED.
18. ANCHOR CLIP- 2" X 2" X 1/4" MIN. STEEL WELDED TO BASE AT GRADE WITH 3/4" ANCHOR BOLT HOLE. 4-REQ'D. ANCHOR BOOTH AFTER FINAL LOCATION. ANCHOR BOLTS NOT INCLUDED.
19. 3/4" Ø CONDUIT FROM FLOR SLOT TO STUB ABOVE ROOF
20. 3/4" Ø CONDUIT FROM C.B. PANEL TO STUB ABOVE ROOF FOR FUTURE SERVICE ENTRANCE.
21. OUTLINE OF 20" DEEP STAINLESS STEEL COUNTER WITH PAINTED STEEL DETACHABLE 4-DRAWER BASE CABINET. REFER TO SHEET SUP-1 FOR LAYOUT.
22. 6" X 2" POST CHASE RACEWAY FROM FLOOR TO CEILING.

NOTE: PAR-KUT BOOTHS ARE OF SINGLE UNIT WELDED GALVANIZED STEEL CONSTRUCTION, FACTORY ASSEMBLED AND DELIVERED SET UP. FAILURE TO SECURELY ANCHOR BOOTH MAY RESULT IN OVERTURNING OF UNIT AND SERIOUS INJURY TO OCCUPANT.

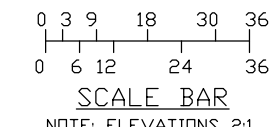
- A. GLAZING TO BE HEAT MIRROR INSULATED SAFETY GLAZING WITH PAINTED STEEL EXTERIOR WINDOW FRAMES AND PAINTED ALUMINUM INTERIOR GLAZING STOPS.
- B. PAINT- A RUST INHIBITIVE PRIMER WITH AN INDUSTRIAL FINISH.
- C. ELECTRICAL- ALL WIRING BY PAR-KUT TO BE #12(MIN) STRANDED COPPER, THHN ENCLOSED IN 1/2"(MIN) E.M.T. PER NATIONAL ELECTRIC CODE. FITTINGS, FIXTURES & DEVICES ARE U.L. LABELED. ALL WIRING TO TERMINATE AT C.B. PANEL. ALL CIRCUITS HAVE GREEN GROUND WIRE.
- D. BOOTH WILL HAVE A 3" CANOPY OVERHANG ON ALL SIDES.
- E. LIFTING RING(S) ARE PROVIDED IN ROOF.
- F. NO ON SITE WORK BY PAR-KUT.
- G. ROOF SLOPES TO DRAIN.



S1 SECTION NO SCALE



PLAN VIEW E1



A/E NOTES	
PAINT COLOR: MATCH DUPONT TAUPE	#1007
SHEET VINYL COLOR: SMOKE	#86517

NOTE: THIS PRINT AND DESIGN ARE THE PROPERTY OF PAR-KUT INTERNATIONAL, INC. IT MUST NOT BE REPRODUCED IN ANY MANNER, NOR SHALL IT BE SUBMITTED TO OUTSIDE PARTIES FOR EXAMINATION WITHOUT OUR CONSENT. IT SHALL BE USED ONLY AS A MEANS OF REFERENCE TO WORK DESIGNED AND FURNISHED BY PAR-KUT. PAR-KUT RESERVES THE RIGHT TO MAKE CHANGES TO DESIGN FOR ENGINEERING PURPOSES WITHOUT NOTICE. REVISIONS MAY NOT BE NOTED.

PAR-KUT INTERNATIONAL, INC.
 40961 Production Drive
 Harrison Twp, Mich.
 48045-1351
 PH. (810) 468-2947

DWG# 01-297-305 SHEET A-1
 GEORGE BUSH INT'L AIRPORT
 R.H. TONETTI CONSTRUCTION
 ECONOMY LOT UPGRADES
 HOUSTON, TX

SCALE NTS	DRAWN BY AJP	REVISED 6-25-2001
DATE 5-24-2001	SIZE 5'-6" X 9'	QTY 9
CHK'D BY:	SALES REPRESENTATIVE JIM SHAUNE	