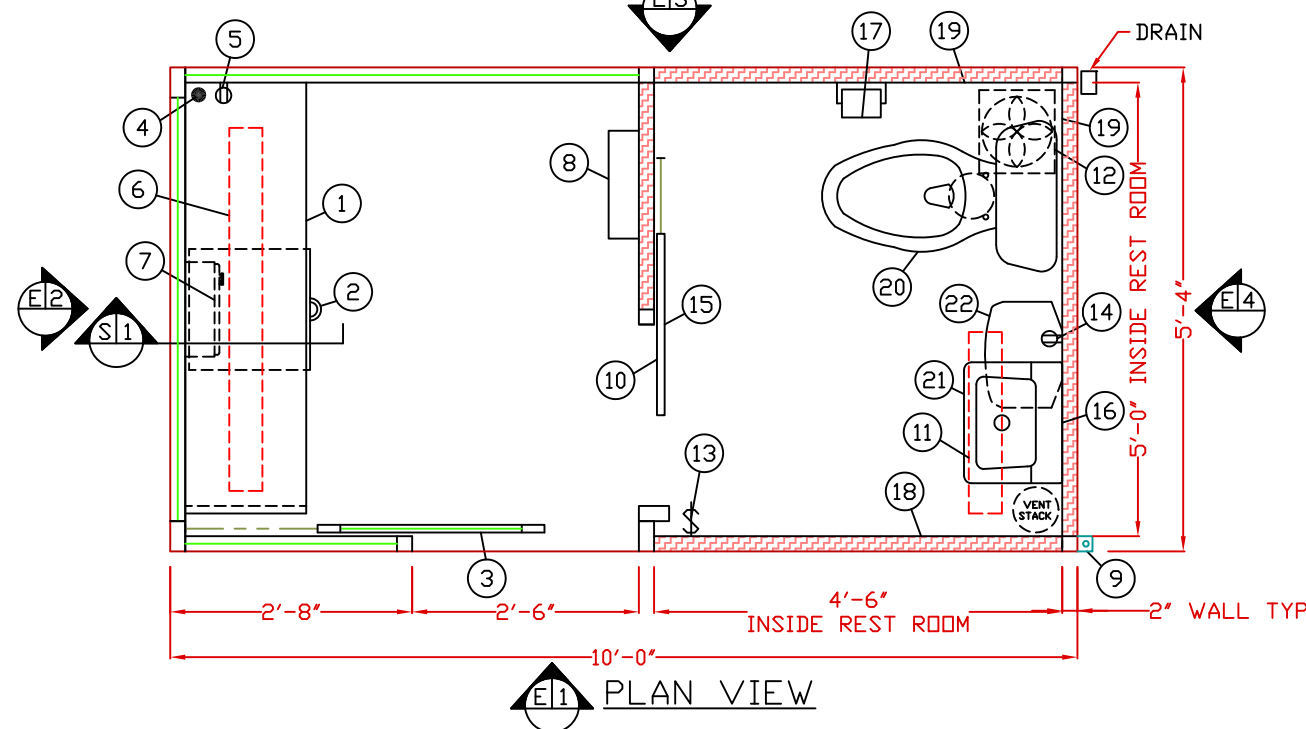


E1 ELEVATION

E2 ELEVATION

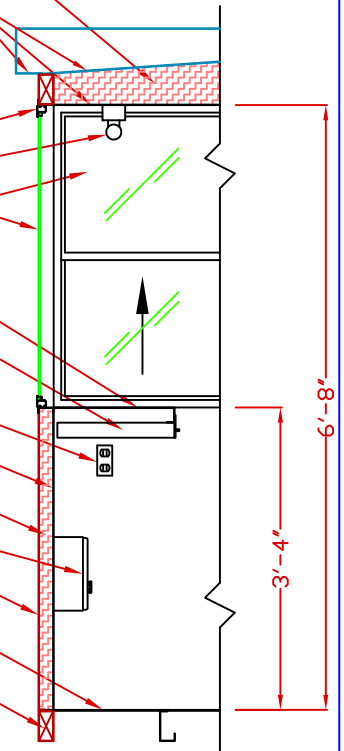
E3 ELEVATION



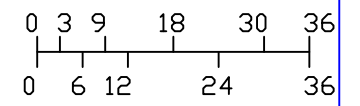
E1 PLAN VIEW

R=17.4 INSULATION
14GA. GALV. STEEL ROOF,
CEILING, AND CANOPY

ANODIZED ALUMINUM WINDOW FRAME
FLUORESCENT LIGHT FIXTURE
SAFETY GLAZING
14GA. PAINTED GALV. STEEL COUNTER
PAINTED STORAGE DRAWER
DUPLEX OUTLET
18GA. GALV. STEEL INNER PANEL
R=10 INSULATION
FAN FORCED HEATER
14GA. GALV. STEEL OUTER PANEL
12GA. GALV. 4-WAY DIAMOND
PLATE STEEL FLOOR
2" X 4" GALV. STEEL TUBE BASE



S1 SECTION
NO SCALE



SCALE BAR
NOTE: ELEVATIONS 2:1

1. COUNTER- 18" DEEP PAINTED GALVANIZED STEEL MOUNTED AT SILL.
2. PAINTED STORAGE DRAWER BENEATH COUNTER.
3. DOOR- 30" WIDE, SLIDING WITH WEATHER-STRIPPING, BALL BEARING HANGERS, HEAVY DUTY TRACK, PAINTED STEEL KICK PANEL, SAFETY GLAZING, LOCK, AND HARDWARE.
4. HOLE IN COUNTER FOR DROP CORDS.
5. DUPLEX OUTLET MOUNTED BELOW COUNTER.
6. FLUORESCENT LIGHT FIXTURE WITH SWITCH ATTACHED.
7. HEATER- WALL MOUNTED WITH INTEGRAL THERMOSTAT CONTROL.
8. C.B. PANEL- 12 SPACE, 120/240V, 1Ø-3 WIRE WITH GROUND WIRE. 100 AMP MAIN BREAKER INCLUDED.
9. ANCHOR CLIP- 2" X 2" X 1/4"(MIN) STEEL ANCHOR CLIP WITH A 3/4" ANCHOR BOLT HOLE, 4-REQ'D, ONE EACH CORNER, WELDED TO BASE AT GRADE. ANCHOR BOOTH AFTER FINAL LOCATION. ANCHOR BOLTS NOT INCLUDED.
10. SLIDING PRIVACY DOOR WITH LOCK.
11. FLUORESCENT LIGHT FIXTURE.
12. EXHAUST FAN.
13. SWITCH FOR REST ROOM LIGHT AND EXHAUST FAN.
14. GFI RECEPTACLE.
15. COAT HOOK MOUNTED ON DOOR.
16. MIRROR.
17. TOILET PAPER HOLDER.
18. PAPER TOWEL DISPENSER.
19. OFF WHITE FIBERGLASS REINFORCED PANEL BACK SPLASH.
20. WATER CLOSET WITH OPEN FRONT SEAT SHIPPED LOOSE WITH ON SITE INSTALLATION BY OTHERS.
21. LAVATORY WITH CHROME FAUCET SHIPPED LOOSE WITH ON SITE INSTALLATION BY OTHERS.
22. ARISTON 2-1/2 GALLON POINT OF USE WATER HEATER SHIPPED LOOSE WITH ON SITE INSTALLATION BY OTHERS.

NOTE: PAR-KUT BOOTHS ARE OF SINGLE UNIT WELDED STEEL CONSTRUCTION, FACTORY ASSEMBLED AND DELIVERED SET UP. FAILURE TO SECURELY ANCHOR BOOTH MAY RESULT IN OVERTURNING OF UNIT AND SERIOUS INJURY TO OCCUPANT.

- A. GLAZING- TEMPERED SAFETY GLAZING SET IN ANODIZED ALUMINUM WINDOW FRAMES. VENT WINDOWS WILL BE PROVIDED INSECT SCREENS.
- B. PAINT- A RUST INHIBITIVE PRIMER WITH AN INDUSTRIAL FINISH.
- C. ELECTRICAL- ALL WIRING BY PAR-KUT TO BE #12(MIN) STRANDED COPPER, THHN ENCLOSED IN 1/2"(MIN) E.M.T. PER NATIONAL ELECTRIC CODE. FITTINGS, FIXTURES, AND DEVICES ARE U.L. LABELED. ALL WIRING TO TERMINATE AT C.B. PANEL. ALL CIRCUITS HAVE GREEN GROUND WIRE.
- D. BOOTH WILL HAVE A 3" CANOPY OVERHANG ON ALL SIDES.
- E. LIFTING RING(S) ARE PROVIDED ON ROOF.
- F. NO ON SITE WORK BY PAR-KUT.

NOTE: THIS PRINT AND DESIGN ARE THE PROPERTY OF PAR-KUT INTERNATIONAL, INC. IT MUST NOT BE REPRODUCED IN ANY MANNER, NOR SHALL IT BE SUBMITTED TO OUTSIDE PARTIES FOR EXAMINATION WITHOUT OUR CONSENT. IT SHALL BE USED ONLY AS A MEANS OF REFERENCE TO WORK DESIGNED AND FURNISHED BY PAR-KUT. PAR-KUT RESERVES THE RIGHT TO MAKE CHANGES TO DESIGN FOR ENGINEERING PURPOSES WITHOUT NOTICE. REVISIONS MAY NOT BE NOTED.

PAR-KUT INTERNATIONAL, INC.
40961 Production Drive
Harrison Twp, Mich.
48045-1351
PH. (586) 468-2947
www.parkut.com

DWG# PK105R SHEET A-1

STANDARD 5'-4" X 10' BOOTH
MODEL 105R

GENERAL NOTES

PAINT COLOR:
(PLEASE SPECIFY COLOR)

PO#	DRAWN BY	REVISED
SCALE	DLT	1-15-2009
NTS		QTY
DATE	SIZE	
8-2-2002	5'-4" X 10'	
CHK'D BY:	SALES REPRESENTATIVE	