

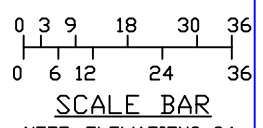
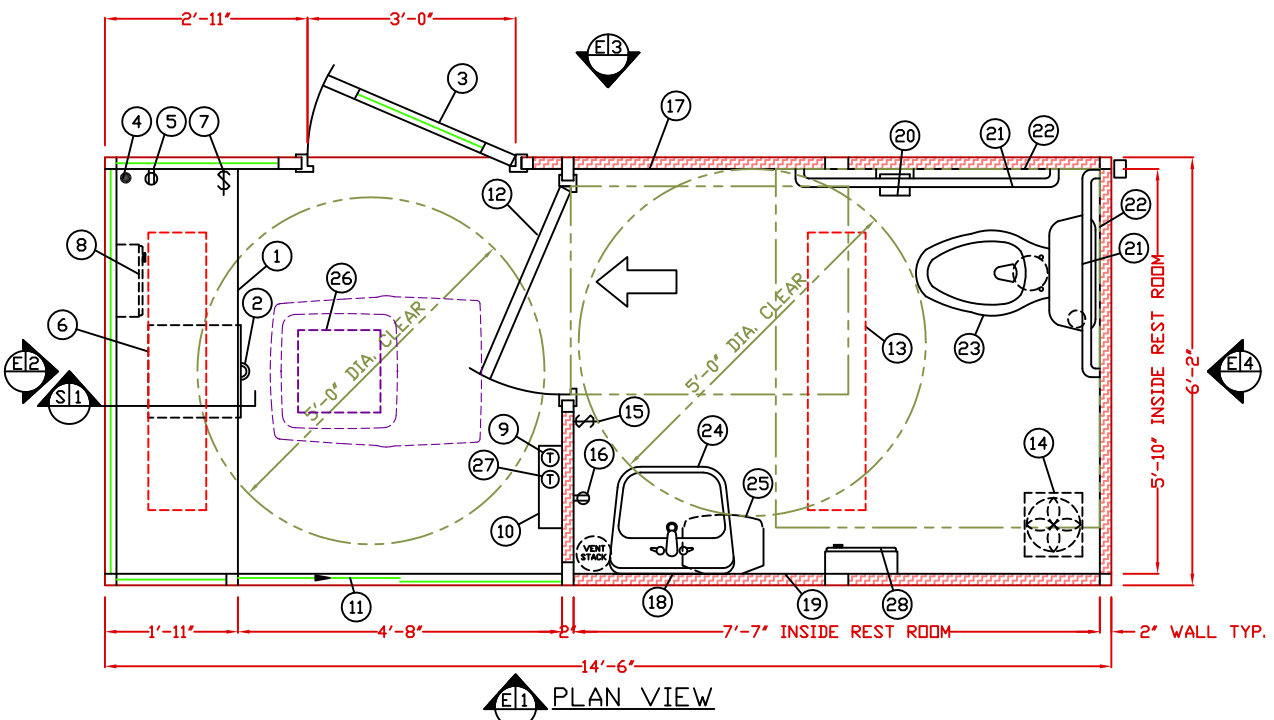
- a. 3"Ø HOLE IN FLOOR FOR WATER INLET, 2-REQ'D.
- b. 6"Ø HOLE IN FLOOR FOR WATER CLOSET.
- c. VENT STACK: 6"Ø HOLE IN FLOOR  
5"Ø HOLE THROUGH ROOF
- d. SLOT IN FLOOR FOR ELECTRICAL SERVICE ENTRANCE TO C.B. PANEL ABOVE.  
3" X 3" X 1/4"(MIN) STEEL ANCHOR CLIP WITH A 3/4" ANCHOR BOLT HOLE, 4-REQ'D,  
ONE EACH CORNER. ANCHOR BOLT AFTER FINAL LOCATION. ANCHOR BOLTS NOT  
INCLUDED.
- e. OUTER EDGE OF BOOTH.
- f. OUTER EDGE OF BOOTH.

NOTE: PROVIDE 120/240V, 1Ø-3 WIRE SERVICE WITH GROUND.  
SERVICE ENTRANCE/ANCHOR BOLT LAYOUT

1. COUNTER- 21" DEEP PAINTED GALVANIZED STEEL MOUNTED 32" ABOVE FLOOR.
2. PAINTED STORAGE DRAWER BENEATH COUNTER.
3. DOOR- 36" WIDE, SWINGING STEEL WITH WEATHER-STRIPPING, BALL BEARING BUTTS, SAFETY GLAZING, HYDRAULIC CLOSER, LEVER HANDLE LOCK, AND HARDWARE.
4. HOLE IN COUNTER FOR DROP CORDS.
5. DUPLEX OUTLET MOUNTED BELOW COUNTER.
6. FLUORESCENT LIGHT FIXTURE WITH ACRYLIC LENS.
7. SWITCH FOR WORK AREA LIGHT.
8. HEATER- WALL MOUNTED WITH WALL THERMOSTAT CONTROL.
9. THERMOSTAT FOR HEATER.
10. C.B. PANEL- 12 SPACE, 120/240V, 1Ø-3 WIRE WITH GROUND WIRE. 100 AMP MAIN BREAKER INCLUDED.
11. HORIZONTAL SLIDING TRANSACTION WINDOW.
12. SWINGING PRIVACY DOOR WITH LOCK.
13. FLUORESCENT LIGHT FIXTURE WITH ACRYLIC LENS.
14. 80 CFM EXHAUST FAN.
15. SWITCH FOR REST ROOM LIGHT AND EXHAUST FAN.
16. GFI RECEPTACLE.
17. COAT HOOK MOUNTED ON WALL.
18. MIRROR.
19. PAPER TOWEL DISPENSER.
20. TOILET PAPER HOLDER.
21. STAINLESS STEEL GRAB BAR.
22. OFF WHITE FIBERGLASS REINFORCED PANEL BACK SPLASH.
23. WATER CLOSET WITH OPEN FRONT SEAT SHIPPED LOOSE WITH ON SITE INSTALLATION BY OTHERS.
24. LAVATORY WITH CHROME FAUCET SHIPPED LOOSE WITH ON SITE INSTALLATION BY OTHERS.
25. ARISTON 2-1/2 GALLON POINT OF USE WATER HEATER SHIPPED LOOSE WITH ON SITE INSTALLATION BY OTHERS.
26. OPTIONAL AIR CONDITIONER- ROOF MOUNTED WITH WALL THERMOSTAT CONTROL.
27. OPTIONAL THERMOSTAT CONTROL FOR OPTIONAL AIR CONDITIONER.
28. OPTIONAL HEATER.

NOTE: PAR-KUT BOOTHS ARE OF SINGLE UNIT WELDED STEEL CONSTRUCTION, FACTORY ASSEMBLED AND DELIVERED SET UP. FAILURE TO SECURELY ANCHOR BOOTH MAY RESULT IN OVERTURNING OF UNIT AND SERIOUS INJURY TO OCCUPANT.

- A. GLAZING- TEMPERED SAFETY GLAZING SET IN ANODIZED ALUMINUM WINDOW FRAMES.
- B. PAINT- A RUST INHIBITIVE PRIMER WITH AN INDUSTRIAL FINISH.
- C. ELECTRICAL- ALL WIRING BY PAR-KUT TO BE #12(MIN) STRANDED COPPER, THHN ENCLOSED IN 1/2"(MIN) E.M.T. PER NATIONAL ELECTRIC CODE. FITTINGS, FIXTURES, AND DEVICES ARE U.L. LABELED. ALL WIRING TO TERMINATE AT C.B. PANEL. ALL CIRCUITS HAVE GREEN GROUND WIRE.
- D. BOOTH WILL HAVE A 3" CANOPY OVERHANG ON ALL SIDES.
- E. LIFTING RING(S) ARE PROVIDED ON ROOF.
- F. NO ON SITE WORK BY PAR-KUT.



NOTE: ELEVATIONS 2:1

NOTE: THIS PRINT AND DESIGN ARE THE PROPERTY OF PAR-KUT INTERNATIONAL, INC. IT MUST NOT BE REPRODUCED IN ANY MANNER, NOR SHALL IT BE SUBMITTED TO OUTSIDE PARTIES FOR EXAMINATION WITHOUT OUR CONSENT. IT SHALL BE USED ONLY AS A MEANS OF REFERENCE TO WORK DESIGNED AND FURNISHED BY PAR-KUT. PAR-KUT RESERVES THE RIGHT TO MAKE CHANGES TO DESIGN FOR ENGINEERING PURPOSES WITHOUT NOTICE. REVISIONS MAY NOT BE NOTED.

PAR-KUT INTERNATIONAL, INC.  
40961 Production Drive  
Harrison Twp, Mich.  
48045-1551  
Ph. (586) 468-2947  
www.parkut.com



DWG# PK1466R SHEET A-1

STANDARD 6'-2" X 14'-6"  
ADA REST ROOM BOOTH  
MODEL 1466R

**A.D.A. NOTE**  
BOOTH MUST BE HANDICAP ACCESSIBLE. THE FOUNDATION MAY BE RECESSED OR A 1:12 RAMP MUST BE PROVIDED SO THAT MAXIMUM CHANGE IN LEVEL FROM GRADE TO FINISH FLOOR DOES NOT EXCEED 1/4"

GENERAL NOTES		
PAINT COLOR: (PLEASE SPECIFY COLOR)		
SCALE NTS	DRAWN BY DLT	REVISED 1-19-2009
DATE 8-2-2002	SIZE 6'-2" X 14'-6"	QTY
CHK'D BY:	SALES REPRESENTATIVE	