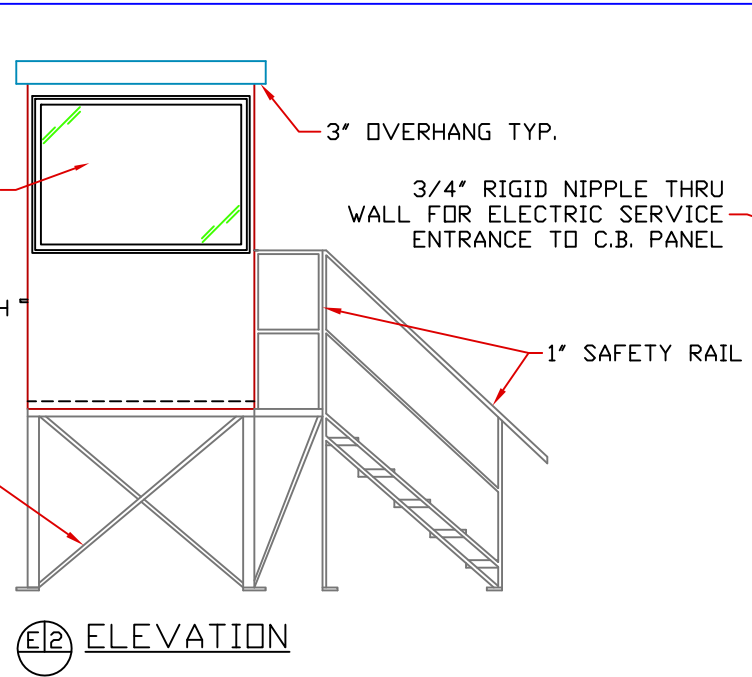
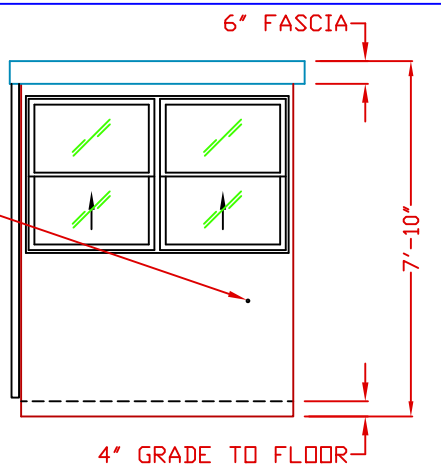


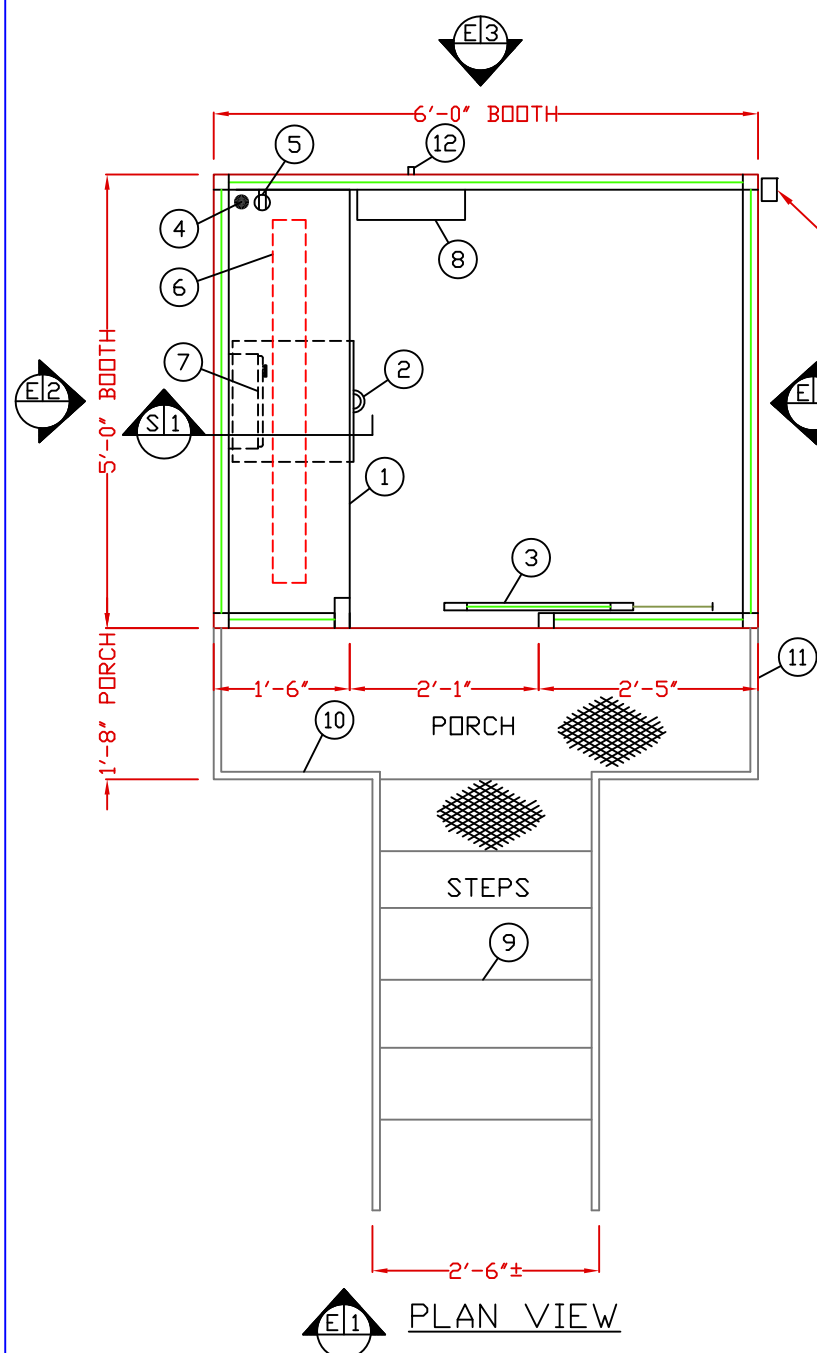
E1 ELEVATION



E2 ELEVATION



E3 ELEVATION
STAND NOT SHOWN FOR CLARITY



E1 PLAN VIEW

1. COUNTER- 18" DEEP PAINTED GALVANIZED STEEL MOUNTED AT SILL.
2. PAINTED STORAGE DRAWER BENEATH COUNTER.
3. DOOR- 25" WIDE, SLIDING WITH WEATHER-STRIPPING, BALL BEARING HANGERS, HEAVY DUTY TRACK, PAINTED STEEL KICK PANEL, SAFETY GLAZING, LOCK, AND HARDWARE.
4. HOLE IN COUNTER FOR DROP CORDS.
5. DUPLEX OUTLET MOUNTED BELOW COUNTER.
6. FLUORESCENT LIGHT FIXTURE WITH SWITCH ATTACHED.
7. HEATER- WALL MOUNTED WITH INTEGRAL THERMOSTAT CONTROL.
8. C.B. PANEL- 12 SPACE, 120/240V, 1Ø-3 WIRE WITH GROUND WIRE. 100 AMP MAIN BREAKER INCLUDED.
9. 3/4" NIPPLE THROUGH WALL FOR ELECTRICAL SERVICE ENTRANCE TO C.B. PANEL.
10. GRIP STRUT STEPS, 5-REQ'D.
11. GRIP STRUT PORCH.
12. 1" SAFETY RAILS.

NOTE: PAR-KUT BOOTHS ARE OF SINGLE UNIT WELDED STEEL, FACTORY ASSEMBLED AND DELIVERED SET UP. FAILURE TO SECURELY ANCHOR BOOTH MAY RESULT IN OVERTURNING OF UNIT AND SERIOUS INJURY TO OCCUPANT.

- A. GLAZING- TEMPERED SAFETY GLAZING SET IN ANODIZED ALUMINUM WINDOW FRAMES. VENT WINDOWS WILL BE PROVIDED INSECT SCREENS.
- B. PAINT- A RUST INHIBITIVE PRIMER WITH AN INDUSTRIAL FINISH.
- C. ELECTRICAL- ALL WIRING BY PAR-KUT TO BE #12(MIN) STRANDED COPPER, THHN ENCLOSED IN 1/2"(MIN) E.M.T. PER NATIONAL ELECTRIC CODE. FITTINGS, FIXTURES, AND DEVICES ARE U.L. LABELED. ALL WIRING TO TERMINATE AT C.B. PANEL. ALL CIRCUITS HAVE GREEN GROUND WIRE.
- D. BOOTH WILL HAVE A 3" CANOPY OVERHANG ON ALL SIDES.
- E. LIFTING RING(S) ARE PROVIDED ON ROOF.
- F. NO ON SITE WORK BY PAR-KUT.

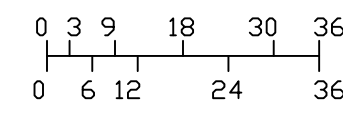
R=17.4 INSULATION
14GA. GALV. STEEL ROOF, CANOPY, AND CEILING

- ANODIZED ALUMINUM WINDOW FRAME
- FLUORESCENT LIGHT FIXTURE
- TEMPERED SAFETY GLAZING
- 14GA. PAINTED GALV. STEEL COUNTER
- PAINTED STORAGE DRAWER
- C.B. PANEL
- DUPLEX OUTLET
- 18GA. GALV. STEEL INNER PANEL
- R=10 INSULATION
- 14GA. GALV. STEEL OUTER PANEL
- FAN FORCED HEATER
- 12GA. GALV. 4-WAY DIAMOND PLATE STEEL FLOOR
- 2" X 4" GALV. STEEL TUBE BASE
- R=18.6 INSULATION
- 18GA. STEEL COVER PLATE

S1 SECTION
NO SCALE

NOTE: THIS PRINT AND DESIGN ARE THE PROPERTY OF PAR-KUT INTERNATIONAL, INC. IT MUST NOT BE REPRODUCED IN ANY MANNER, NOR SHALL IT BE SUBMITTED TO OUTSIDE PARTIES FOR EXAMINATION WITHOUT OUR CONSENT. IT SHALL BE USED ONLY AS A MEANS OF REFERENCE TO WORK DESIGNED AND FURNISHED BY PAR-KUT. PAR-KUT RESERVES THE RIGHT TO MAKE CHANGES TO DESIGN FOR ENGINEERING PURPOSES WITHOUT NOTICE. REVISIONS MAY NOT BE NOTED.

PAR-KUT INTERNATIONAL, INC.
40961 Production Drive
Harrison Twp, Mich.
48045-1351
PH. (586) 468-2947
www.parkut.com



SCALE BAR
NOTE: ELEVATIONS 2:1

GENERAL NOTES
PAINT COLOR:
(PLEASE SPECIFY COLOR)

DWG# PK65S		SHEET A-1	
STANDARD 5' X 6' BOOTH WITH STAND MODEL 65S			
PO#	SCALE	DRAWN BY	REVISED
	NTS	DLT	1-15-2009
DATE	SIZE	QTY	
8-2-2002	5' X 6'		
CHR'D BY:	SALES REPRESENTATIVE		