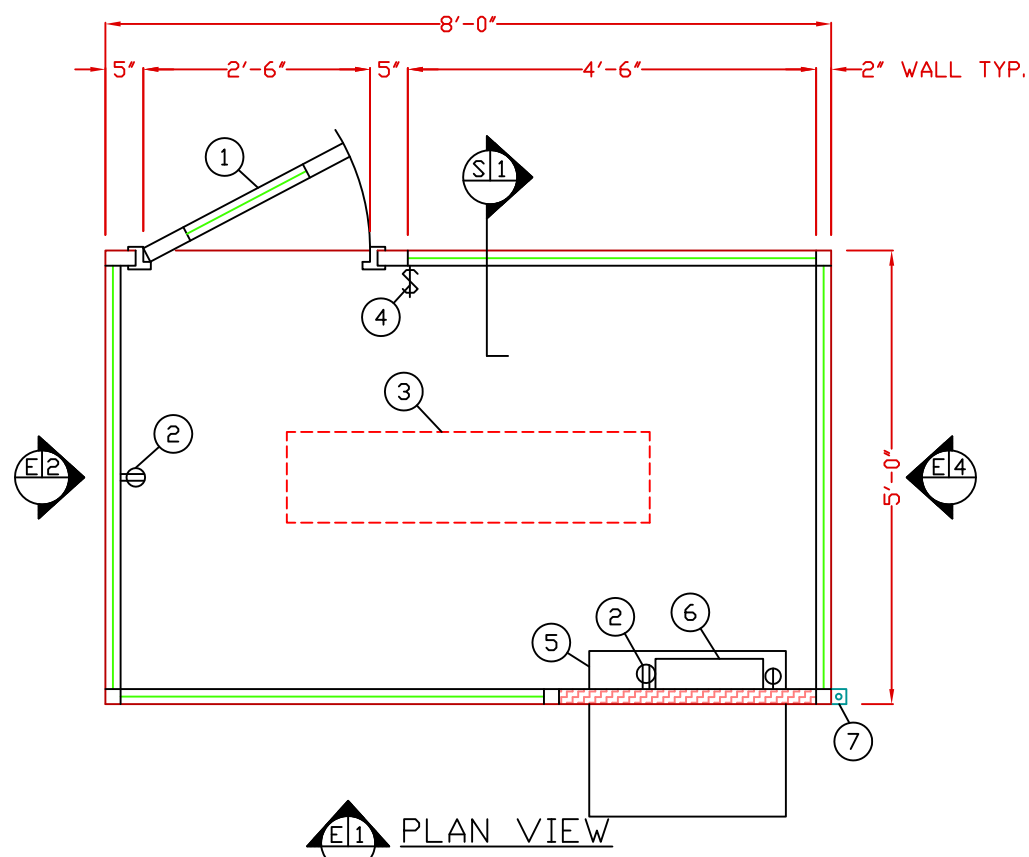


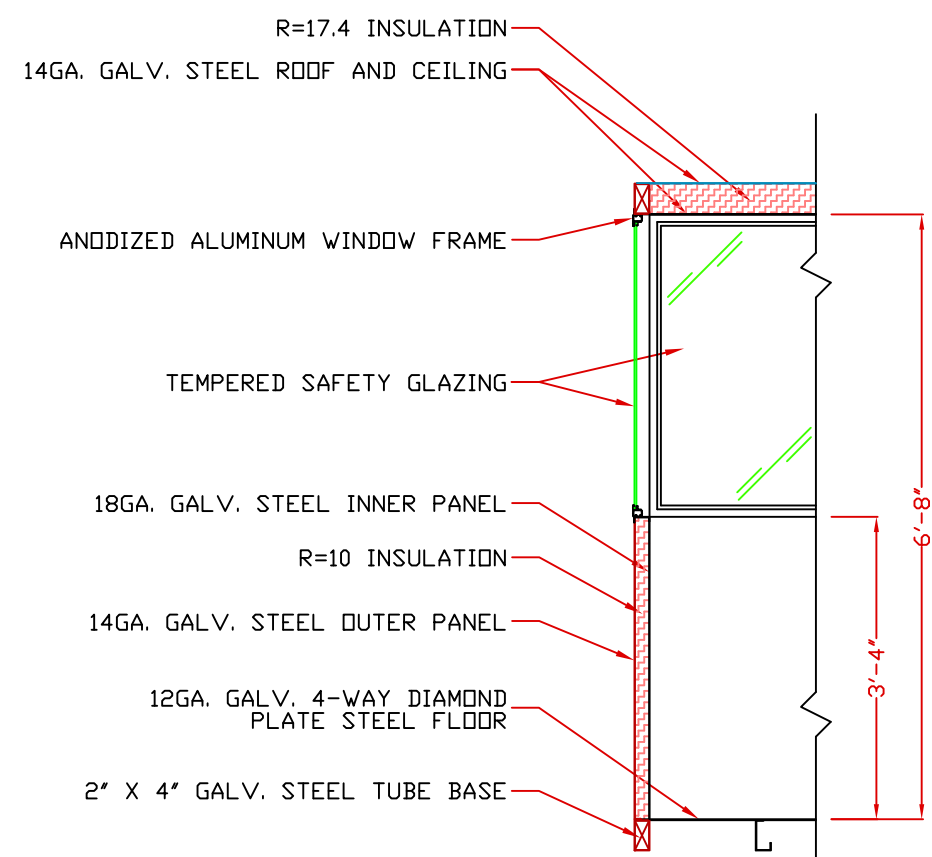
E1 ELEVATION

E2 ELEVATION

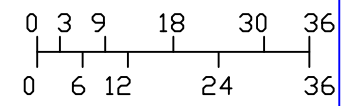
E3 ELEVATION



E1 PLAN VIEW



S1 SECTION
NO SCALE



SCALE BAR

NOTE: ELEVATIONS 2:1

1. DOOR- 30" WIDE, SWINGING STEEL WITH WEATHER-STRIPPING, BALL BEARING BUTTS, SAFETY GLAZING, LOCK, AND HARDWARE.
2. DUPLEX OUTLET, 2-REQ'D, MOUNTED 18" ABOVE FLOOR.
3. 2-32 WATT FLUORESCENT LIGHT WITH ACRYLIC LENS.
4. SWITCH FOR INTERIOR LIGHT.
5. AIR CONDITIONER- HIGH WALL MOUNTED WITH INTEGRAL THERMOSTAT CONTROL.
6. C.B. PANEL- 12 SPACE, 120/240V, 1Ø-3 WIRE WITH GROUND. 100 AMP MAIN BREAKER INCLUDED.
7. 2" X 2" X 1/4"(MIN) STEEL ANCHOR CLIP WITH 3/4" ANCHOR BOLT HOLE, 4-REQ'D, WELDED TO BASE AT GRADE. ANCHOR BOOTH AFTER FINAL LOCATION. ANCHOR BOLTS NOT INCLUDED.

NOTE: PAR-KUT BOOTHS ARE OF SINGLE UNIT WELDED STEEL CONSTRUCTION, FACTORY ASSEMBLED AND DELIVERED SET UP. FAILURE TO SECURELY ANCHOR BOOTH MAY RESULT IN OVERTURNING AND SERIOUS INJURY TO OCCUPANT.

- A. GLAZING- TEMPERED SAFETY GLAZING SET IN ANODIZED ALUMINUM WINDOW FRAMES.
- B. PAINT- A RUST INHIBITIVE PRIMER WITH AN INDUSTRIAL FINISH.
- C. ELECTRICAL- ALL WIRING BY PAR-KUT TO BE #12(MIN) STRANDED COPPER, THHN ENCLOSED IN 1/2"(MIN) E.M.T. PER NATIONAL ELECTRIC CODE. FITTINGS, FIXTURES, AND DEVICES ARE U.L. LABELED. ALL WIRING TO TERMINATE AT C.B. PANEL. ALL CIRCUITS HAVE GREEN GROUND WIRE.
- D. BOOTH WILL HAVE NO CANOPY OVERHANG ON ANY SIDE.
- E. LIFTING RING(S) ARE PROVIDED ON ROOF.
- F. NO ON SITE WORK BY PAR-KUT.

NOTE: THIS PRINT AND DESIGN ARE THE PROPERTY OF PAR-KUT INTERNATIONAL, INC. IT MUST NOT BE REPRODUCED IN ANY MANNER, NOR SHALL IT BE SUBMITTED TO OUTSIDE PARTIES FOR EXAMINATION WITHOUT OUR CONSENT. IT SHALL BE USED ONLY AS A MEANS OF REFERENCE TO WORK DESIGNED AND FURNISHED BY PAR-KUT. PAR-KUT RESERVES THE RIGHT TO MAKE CHANGES TO DESIGN FOR ENGINEERING PURPOSES WITHOUT NOTICE. REVISIONS MAY NOT BE NOTED.

PAR-KUT INTERNATIONAL, INC.
40961 Production Drive
Harrison Twp, Mich.
48045-1351
PH. (586) 468-2947
www.parkut.com




DWG# PK85IP SHEET A-1

STANDARD 5' X 8' BOOTH
MODEL 85IP

GENERAL NOTES

PAINT COLOR:
(PLEASE SPECIFY COLOR)

PO#	DRAWN BY	REVISED
SCALE	DLT	1-15-2009
NTS	DLT	QTY
DATE	SIZE	
8-2-2002	5' X 8'	
CHR'D BY:	SALES REPRESENTATIVE	