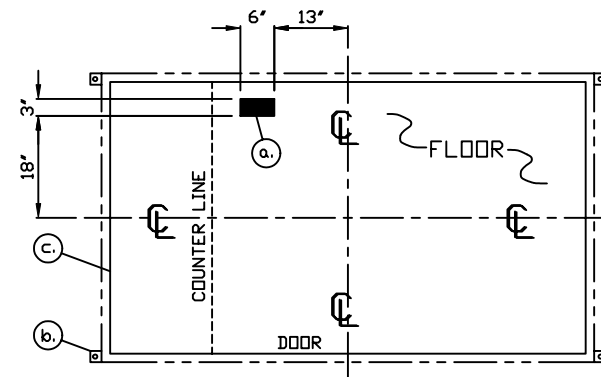


- 3" X 6" SLOT IN FLOOR FOR ELECTRIC SERVICE ENTRANCE TO C.B. PANEL ABOVE
- 2" X 2" X 1/4" MIN. ANCHOR CLIP WITH 3/4" ANCHOR BOLT HOLE, 4-REQ'D. ONE EACH CORNER. ANCHOR BOOTH AFTER FINAL LOCATION. ANCHOR BOLTS NOT INCLUDED
- OUTER EDGE OF BASE

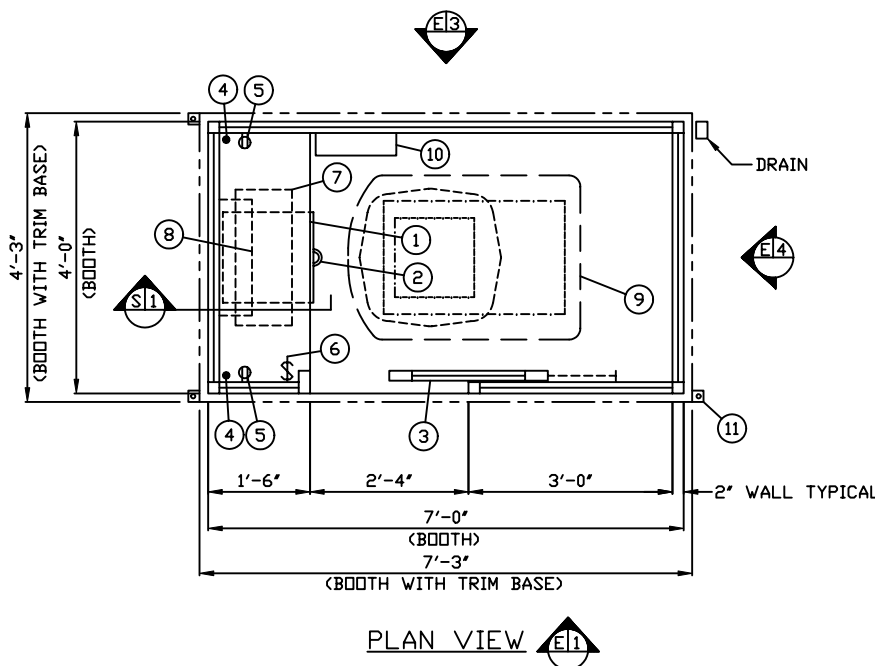
- COUNTER- 18" DEEP PAINTED GALVANIZED STEEL.
- PAINTED STORAGE DRAWER BENEATH COUNTER.
- DOOR- 28" WIDE, SLIDING STEEL WITH WEATHER-STRIPPING, BALL BEARING HANGERS, SAFETY GLAZING, HEAVY DUTY TRACK, HOOK BOLT LOCK, & HARDWARE.
- 1-1/4" HOLE IN COUNTER FOR DROP CORDS TO OUTLET, 2-REQ'D.
- DUPLEX OUTLET- MOUNTED BELOW COUNTER, 2-REQ'D.
- LIGHT SWITCH MOUNTED BELOW COUNTER FOR INTERIOR LIGHT.
- LIGHT- 2-20 WATT LAMP FLUORESCENT LIGHT FIXTURE WITH LENS.
- HEATER- 240V./5,600 WATT FAN FORCED WITH INTEGRAL THERMOSTAT CONTROL.
- AIR CONDITIONER- 120V./13,500 BTU ROOF MOUNTED WITH INTEGRAL THERMOSTAT CONTROL.
- C.B. PANEL- 12 SPACE 120/240V. 1Ø-3 WIRE WITH GROUND BAR. 100 AMP MAIN BREAKER IS INCLUDED.
- ANCHOR CLIP- 2" X 2" X 1/4" MIN. STEEL WELDED TO BASE AT GRADE WITH 3/4" ANCHOR BOLT HOLE. 4-REQ'D. ANCHOR BOOTH AFTER FINAL LOCATION. ANCHOR BOLTS NOT INCLUDED.

NOTE: PAR-KUT BOOTHS ARE OF SINGLE UNIT WELDED GALVANIZED STEEL CONSTRUCTION, FACTORY ASSEMBLED AND DELIVERED SET UP. FAILURE TO SECURELY ANCHOR BOOTH MAY RESULT IN OVERTURNING OF UNIT AND SERIOUS INJURY TO OCCUPANT.

- GLAZING TO BE GRAY TINTED TEMPERED SAFETY GLAZING WITH ALUMINUM INTERIOR GLAZING STOPS WITH 1-1/2" PAINTED STEEL WINDOW FRAMES WITH 1" PAINTED STEEL WINDOW MULLIONS.
- PAINT- A RUST INHIBITIVE PRIMER WITH AN INDUSTRIAL FINISH.
- ELECTRICAL- ALL WIRING BY PAR-KUT TO BE #12(MIN) STRANDED COPPER, THHN ENCLOSED IN 1/2"(MIN) E.M.T. PER NATIONAL ELECTRIC CODE. FITTINGS, FIXTURES & DEVICES ARE U.L. LABELED. ALL WIRING TO TERMINATE AT C.B. PANEL. ALL CIRCUITS HAVE GREEN GROUND WIRE.
- BOOTH WILL HAVE A 6" CANOPY OVERHANG ON ALL SIDES.
- LIFTING RING(S) ARE PROVIDED IN ROOF.
- NO ON SITE WORK BY PAR-KUT.



NOTE: PROVIDE 120/240V. 1Ø-3 WIRE SERVICE WITH GROUND. SERVICE ENTRANCE/ANCHOR BOLT LAYOUT



CODE REFERENCES		NOTE: THIS PRINT AND DESIGN ARE THE PROPERTY OF PAR-KUT INTERNATIONAL, INC. IT MUST NOT BE REPRODUCED IN ANY MANNER, NOR SHALL IT BE SUBMITTED TO OUTSIDE PARTIES FOR EXAMINATION WITHOUT OUR CONSENT. IT SHALL BE USED ONLY AS A MEANS OF REFERENCE TO WORK DESIGNED AND FURNISHED BY PAR-KUT. PAR-KUT RESERVES THE RIGHT TO MAKE CHANGES TO DESIGN FOR ENGINEERING PURPOSES WITHOUT NOTICE. REVISIONS MAY NOT BE NOTED.	
1996 NATIONAL BUILDING CODE 1993 NATIONAL MECHANICAL CODE 1999 NATIONAL ELECTRICAL CODE 1995 CABO MODEL ENERGY CODE ALL WITH NJ AMENDMENTS DESIGN LOADS: ROOF LIVE- 30 PSF ROOF DEAD LOAD - 10 PSF SEISMIC - A _s <0.2 FLOOR LIVE- 50 PSF WIND SPEED- 80 MPH WINTER DESIGN TEMP: +70F DESIGN CRITERIA: USE GROUP- B CONSTRUCTION TYPE- 2C		PAR-KUT INTERNATIONAL, INC. 40961 Production Drive Harrison Twp, Mich. 48045-1351 PH. (810) 468-2947	
A/E NOTES BOOTH COLOR: OXIDE RED #7821 ROOF & WINDOW MULLION COLOR: HUNTER GREEN #5517		DWG# 01-054 SHEET A-1 US DISTRICT COURT PARKING GSA FINANCE DIVISION CAMDEN, NJ	
PD# GS-03P-01-PSM-0014 SCALE NTS DATE 12-4-2000 CHK'D BY:		DRAWN BY AJP REVISED 1-8-2001 SIZE 4' X 7' QTY 1 SALES REPRESENTATIVE TOM DUEMLING	