

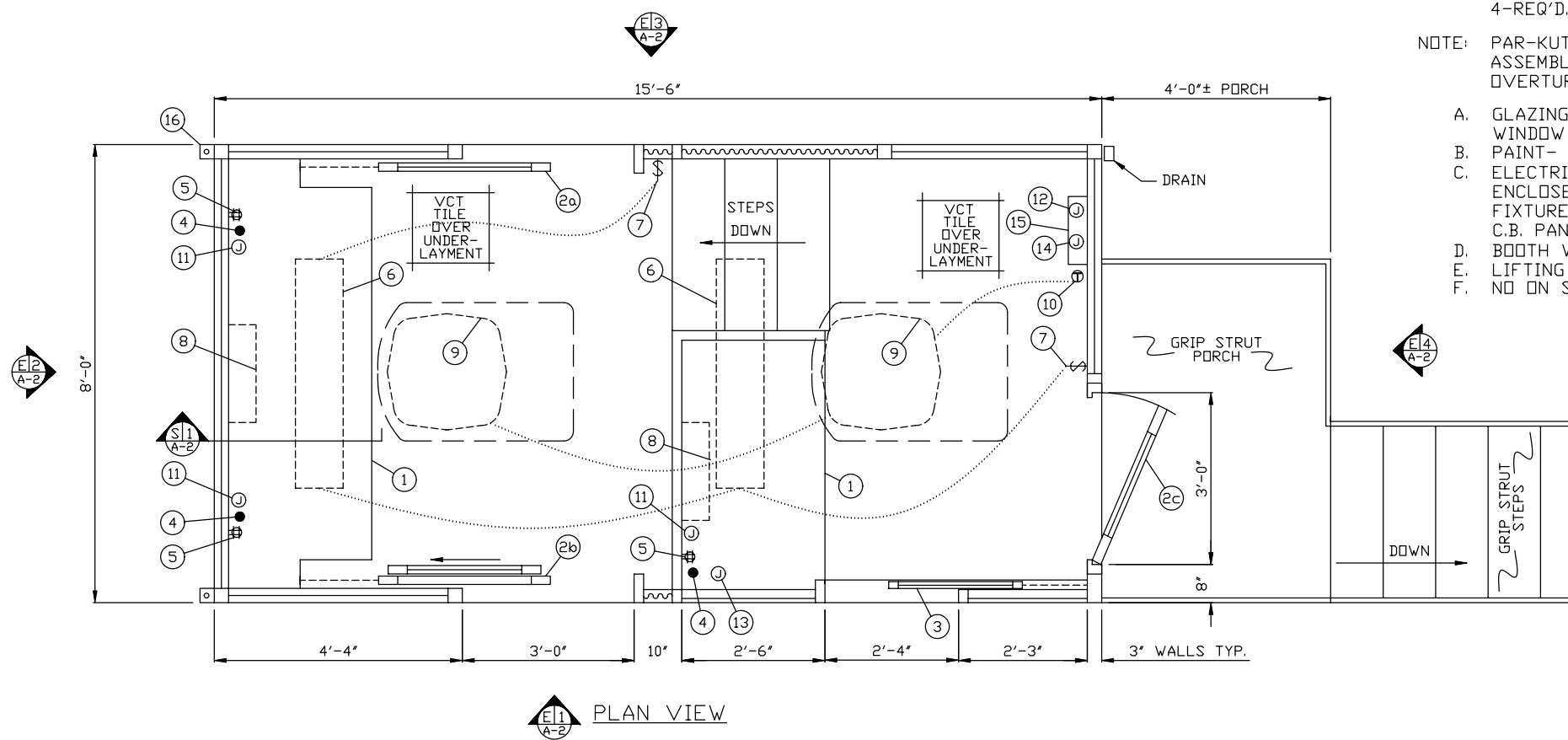
NOTE: PROVIDE 120/240V. 1Ø-3 WIRE SERVICE WITH GROUND.  
SERVICE ENTRANCE/ANCHOR BOLT LAYOUT

- a. 1" NIPPLE THROUGH WALL FOR ELECTRIC SERVICE ENTRANCE TO C.B. PANEL
- b. 3/4" NIPPLE THROUGH WALL FOR COMMUNICATION SERVICE ENTRANCE
- c. 3/4" NIPPLE THROUGH WALL FOR COMMUNICATION SERVICE ENTRANCE
- d. 3/4" NIPPLE THROUGH WALL FOR COMMUNICATION SERVICE ENTRANCE
- e. 3" X 3" X 1/4" MIN. ANCHOR CLIP WITH 1" ANCHOR BOLT HOLE, 4-REQ'D. ONE EACH CORNER. ANCHOR BOLT AFTER FINAL LOCATION. ANCHOR BOLTS NOT INCLUDED
- f. OUTER EDGE OF BASE

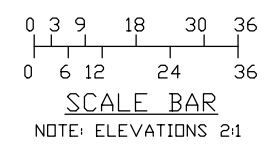
- 1. COUNTER- 30" DEEP STAINLESS STEEL 304-2B MOUNTED 40" ABOVE FINISH FLOOR.
- 2a. DOOR- 36" WIDE, SLIDING STEEL WITH WEATHER-STRIPPING, BALL BEARING HANGERS, SAFETY GLAZING, HEAVY DUTY TRACK, HOOK BOLT LOCK, & HARDWARE.
- 2b. DOUBLE ACTION DOOR- 36" WIDE, SLIDING STEEL WITH WEATHER-STRIPPING, BALL BEARING HANGERS, SIDE SLIDING WINDOW, HEAVY DUTY TRACK, HOOK BOLT LOCK, & HARDWARE.
- 2c. DOOR- 36" WIDE, SWINGING STEEL WITH WEATHER-STRIPPING, BALL BEARING BUTTS SAFETY GLAZING, HYDRAULIC CLOSER, KEY IN KNOB LOCK, & HARDWARE.
- 3. TOP HUNG TRANSACTION WINDOW.
- 4. 2" HOLE IN COUNTER FOR DROP CORDS, 3-REQ'D.
- 5. QUAD OUTLET- MOUNTED BELOW COUNTER, 3-REQ'D.
- 6. LIGHT- 2-34 WATT LAMP FLUORESCENT LIGHT FIXTURE WITH LENS.
- 7. 3-WAY LIGHT SWITCH FOR INTERIOR LIGHTS.
- 8. HEATER- 240V./4,000 WATT Q-MARK #AWH3404 FAN FORCED WITH INTEGRAL THERMOSTAT CONTROL, 2-REQ'D.
- 9. AIR CONDITIONER- 120V/13,500 BTU ROOF MOUNTED CONTROLLED BY A WALL MOUNTED THERMOSTAT.
- 10. THERMOSTAT FOR ROOF MOUNTED AIR CONDITIONERS.
- 11. 2" X 4" JUNCTION BOX MOUNTED BELOW COUNTER, 3-REQ'D. WITH 3/4" RACEWAY TO JUNCTION BOX #12.
- 12. 4" X 4" JUNCTION BOX MOUNTED NEAR CIRCUIT BREAKER PANEL.
- 13. 2" X 4" JUNCTION BOX MOUNTED BELOW COUNTER, WITH 3/4" RACEWAY TO JUNCTION BOX #14.
- 14. 4" X 4" JUNCTION BOX MOUNTED NEAR CIRCUIT BREAKER PANEL.
- 15. C.B. PANEL- 12 SPACE 120/240V. 1Ø-3 WIRE WITH GROUND BAR. 100 AMP MAIN BREAKER IS INCLUDED.
- 16. ANCHOR CLIP- 2" X 2" X 1/4" MIN. STEEL WELDED TO BASE AT GRADE WITH 3/4" ANCHOR BOLT HOLE. 4-REQ'D. ANCHOR BOLT AFTER FINAL LOCATION. ANCHOR BOLTS NOT INCLUDED.

NOTE: PAR-KUT BOOTHS ARE OF SINGLE UNIT WELDED GALVANIZED STEEL CONSTRUCTION, FACTORY ASSEMBLED AND DELIVERED SET UP. FAILURE TO SECURELY ANCHOR BOOTH MAY RESULT IN OVERTURNING OF UNIT AND SERIOUS INJURY TO OCCUPANT.

- A. GLAZING TO BE GRAY TINTED LAMINATED SAFETY GLAZING SET IN ANODIZED ALUMINUM WINDOW FRAMES.
- B. PAINT- A RUST INHIBITIVE EPOXY PRIMER WITH AN INDUSTRIAL ACRYLIC FINISH.
- C. ELECTRICAL- ALL WIRING BY PAR-KUT TO BE #12(MIN) STRANDED COPPER, THHN ENCLOSED IN 1/2"(MIN) E.M.T. PER NATIONAL ELECTRIC CODE. FITTINGS, FIXTURES & DEVICES ARE U.L. LABELED. ALL WIRING TO TERMINATE AT C.B. PANEL. ALL CIRCUITS HAVE GREEN GROUND WIRE.
- D. BOOTH WILL HAVE A 3" CANOPY OVERHANG ON ALL SIDES.
- E. LIFTING RING(S) ARE PROVIDED IN ROOF.
- F. NO ON SITE WORK BY PAR-KUT.



PLAN VIEW



NOTE: THIS PRINT AND DESIGN ARE THE PROPERTY OF PAR-KUT INTERNATIONAL, INC. IT MUST NOT BE REPRODUCED IN ANY MANNER, NOR SHALL IT BE SUBMITTED TO OUTSIDE PARTIES FOR EXAMINATION WITHOUT OUR CONSENT. IT SHALL BE USED ONLY AS A MEANS OF REFERENCE TO WORK DESIGNED AND FURNISHED BY PAR-KUT. PAR-KUT RESERVES THE RIGHT TO MAKE CHANGES TO DESIGN FOR ENGINEERING PURPOSES WITHOUT NOTICE. REVISIONS MAY NOT BE NOTED.

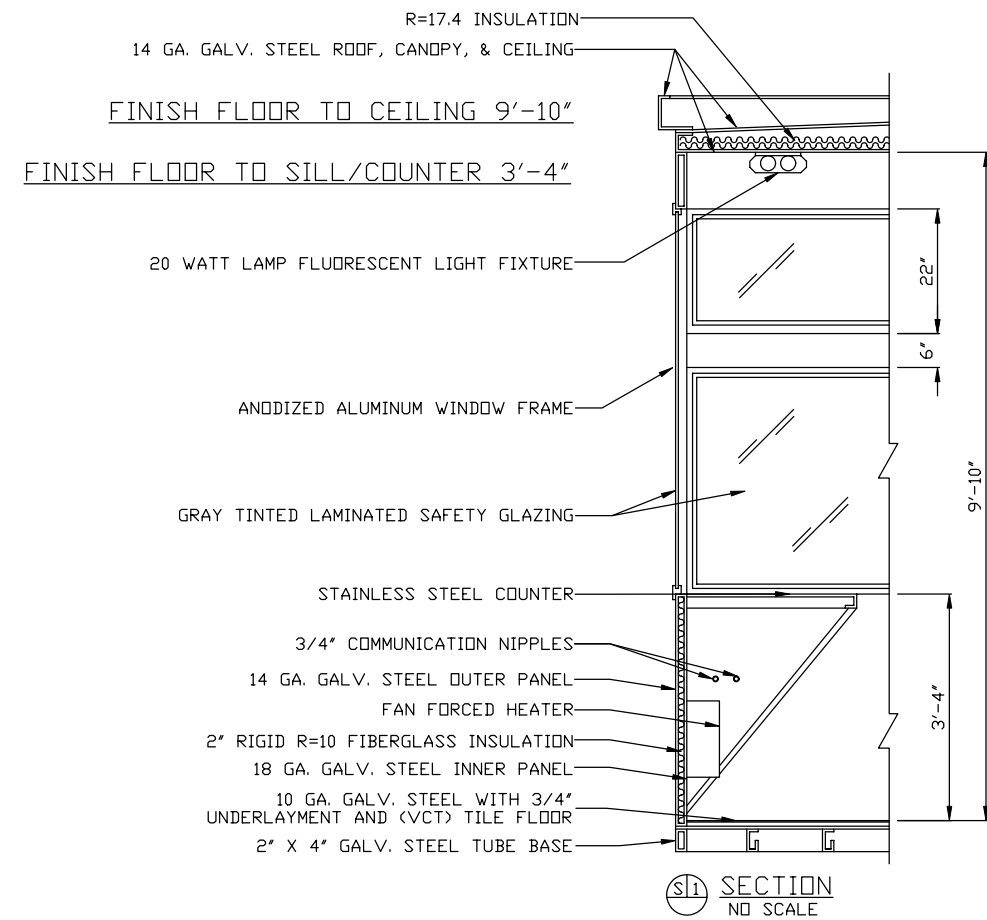
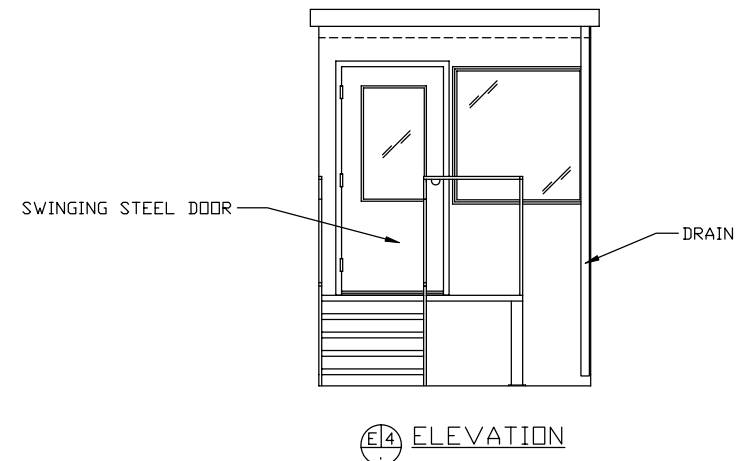
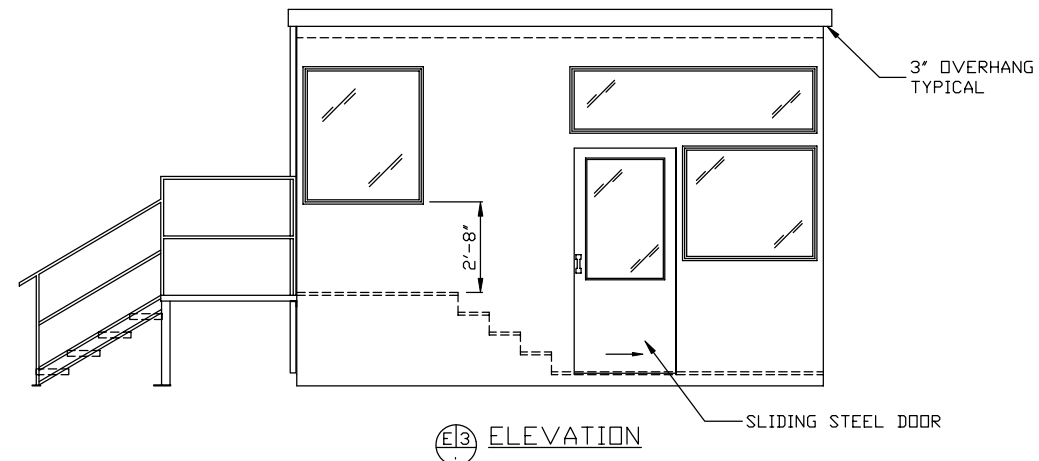
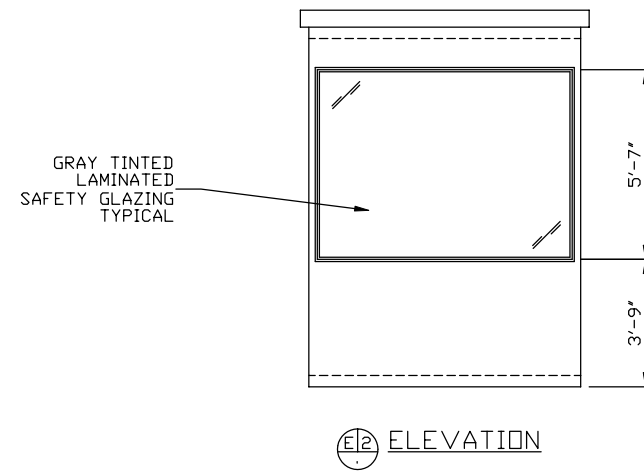
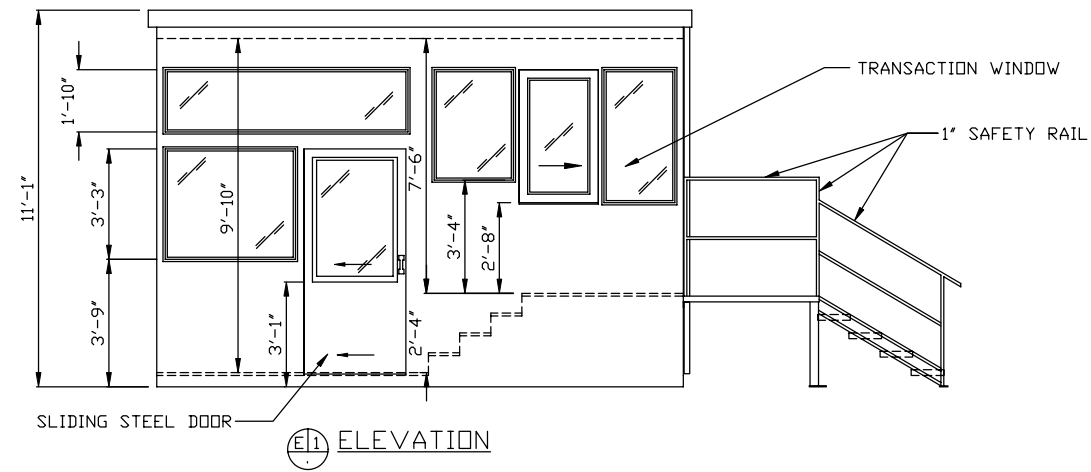
PAR-KUT INTERNATIONAL, INC.  
40961 Production Drive  
Harrison Twp, Mich.  
48045-1351  
PH. (586) 468-2947

DWG# 03-191 SHEET A-1

DETROIT/WINDSOR TUNNEL  
LANE #11  
DETROIT, MI

GENERAL NOTES  
PAINT COLOR: IMRON #57704 GRAY

SCALE NTS	DRAWN BY DNE	REVISED 7-8-2003
DATE 5-2-2003	SIZE 8' X 15'-6"	QTY 1
CHK'D BY:	SALES REPRESENTATIVE TOM DUEMLING	



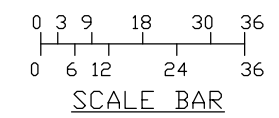
NOTE: THIS PRINT AND DESIGN ARE THE PROPERTY OF PAR-KUT INTERNATIONAL, INC. IT MUST NOT BE REPRODUCED IN ANY MANNER, NOR SHALL IT BE SUBMITTED TO OUTSIDE PARTIES FOR EXAMINATION WITHOUT OUR CONSENT. IT SHALL BE USED ONLY AS A MEANS OF REFERENCE TO WORK DESIGNED AND FURNISHED BY PAR-KUT. PAR-KUT RESERVES THE RIGHT TO MAKE CHANGES TO DESIGN FOR ENGINEERING PURPOSES WITHOUT NOTICE. REVISIONS MAY NOT BE NOTED.

PAR-KUT INTERNATIONAL, INC.  
 40961 Production Drive  
 Harrison Twp, Mich.  
 48045-1351  
 PH. (586) 468-2947



DWG# 03-191 SHEET A-2

DETROIT/WINDSOR TUNNEL  
 LANE #11  
 DETROIT, MI



SCALE NTS	DRAWN BY DNE	REVISED 7-8-2003
DATE 5-2-2003	SIZE 8' X 15'-6"	QTY 1
CHK'D BY:	SALES REPRESENTATIVE TOM DUEMLING	