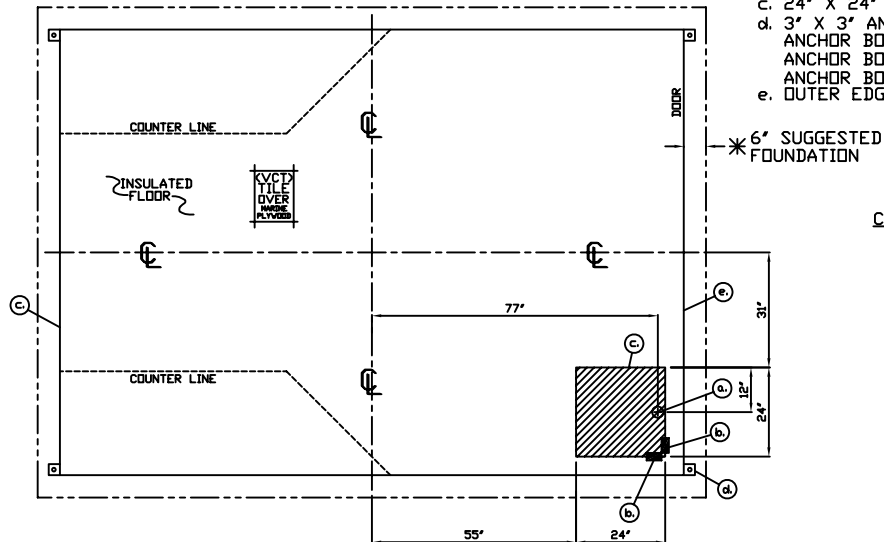


- a. 3" HOLE IN REMOVABLE COVER UNDER CIRCUIT BREAKER PANEL.
- b. TWO SLOTS IN FLOOR FOR WIREMOLD.
- c. 24" X 24" REMOVABLE SCREW COVER PLATE
- d. 3" X 3" ANCHOR CLIP WITH 1" ANCHOR BOLT HOLE, 4-REQ'D. ONE EACH CORNER ANCHOR BOOTH AFTER FINAL LOCATION.
- e. ANCHOR BOLTS NOT INCLUDED
- e. OUTER EDGE OF BASE



NOTE: PROVIDE 120/240V, 1Ø-3 WIRE SERVICE WITH GROUND.
SERVICE ENTRANCE/ANCHOR BOLT LAYOUT

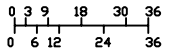


COVER PLATE DETAIL

1. COUNTER- 24" DEEP STAINLESS STEEL 304-2B FINISH MOUNTED 39" ABOVE FINISH FLOOR, 2-REQ'D.
2. STORAGE DRAWER BENEATH COUNTER WITH STAINLESS STEEL FACE, 4-REQ'D.
3. DOOR- 36" WIDE, SWINGING B.R. STEEL WITH WEATHER-STRIPPING, CONTINUOUS HINGE, B.R. SAFETY GLAZING, HYDRAULIC CLOSER, PANIC EXIT DEVICE WITH LEVER HANDLE TRIM, BEST CYLINDER, & HARDWARE.
4. 1-1/4" HOLE IN COUNTER FOR DROP CORDS, 4-REQ'D.
5. 20 AMP DUPLEX OUTLET- MOUNTED BELOW COUNTER, 9-REQ'D.
6. DIMMER SWITCH FOR ONE ROW OF INTERIOR INCANDESCENT DOWN LIGHTS.
7. INCANDESCENT RECESSED DOWN LIGHT WITH 75 WATT LAMP, 8-REQ'D.
8. DIMMER SWITCH FOR ONE ROW OF INTERIOR INCANDESCENT DOWN LIGHTS.
9. 2" X 2" POST.
10. 4000 SERIES WIRE MOLD WITH COVER THRU FLOOR TO ABOVE CEILING, 2-REQ'D.
11. BULLET RESISTING SIDE SLIDING ACCESS PORT 10" X 10", 4-REQ'D.
12. DIGITAL WALL MOUNTED THERMOSTAT CONTROL FOR HVAC ROOF MOUNTED UNIT.
13. DISCONNECT SWITCH 240 VOLT FOR HVAC UNIT.
14. HVAC UNIT ROOF MOUNTED CARRIER 18,000 BTU WITH 10 KW HEAT.
15. C.B. PANEL- GE #TL4020C 40 SPACE 120/240V, 1Ø-3 WIRE WITH GROUND BAR. MAIN LUG ONLY. PAR-KUT INSTALLS BRANCH BREAKERS FOR ALL FACTORY INSTALLED BOOTH ELECTRICAL EQUIPMENT, INCLUDING INTERIOR AND EXTERIOR LIGHT FIXTURES, HVAC, ELECTRIC RECEPTACLES AND INTERCOMS. 6 SPARE SINGLE POLE 20 AMP BREAKERS ARE INCLUDED.
16. ANCHOR CLIP- 3" X 3" STEEL WELDED TO BASE AT GRADE WITH 1" ANCHOR BOLT HOLE. 4-REQ'D. ANCHOR BOOTH AFTER FINAL LOCATION. ANCHOR BOLTS NOT INCLUDED.
17. 2" X 4" JUNCTION BOX FOR FUTURE COMMUNICATION, DATA, ECT. MOUNTED 18" ABOVE FINISH FLOOR WITH 3/4" CONDUIT TO STUB ABOVE CEILING TILE, 10-REQ'D.
18. GROUND FAULT INTERRUPT RECEPTACLE MOUNTED ON ROOF FOR HVAC UNIT.
19. 4" X 4" WEATHER PROOF JUNCTION BOX MOUNTED ON INTERIOR WALL FOR INTERCOM WITH 3/4" RACEWAY TO JUNCTION BOX ITEM #20 AND TO JUNCTION BOX ITEM #21.
20. 4" X 4" WEATHER PROOF JUNCTION BOX MOUNTED ON EXTERIOR WALL WITH RACEWAY TO ITEM #20. PROTECT RACEWAY SO NOT TO COMPROMISE THE BULLET RESISTANT INTEGRITY.
21. JUNCTION BOX WITH COVER MOUNTED IN HEADER ABOVE TILE CEILING NEAR WIRE MOLD WITH 3/4" CONDUIT RACEWAY THROUGH ROOF TO A WEATHERPROOF JUNCTION BOX FOR INTERCOM SPEAKERS (2 ONE EACH SIDE) BY OTHERS.

NOTE: PAR-KUT BOOTHS ARE OF SINGLE UNIT WELDED GALVANIZED STEEL CONSTRUCTION, FACTORY ASSEMBLED AND DELIVERED SET UP. FAILURE TO SECURELY ANCHOR BOOTH MAY RESULT IN OVERTURNING OF UNIT AND SERIOUS INJURY TO OCCUPANT.

- A. GLAZING TO BE BULLET RESISTING SOLAR COOL REFLECTIVE SAFETY GLAZING WITH B.R. STEEL EXTERIOR WINDOW FRAMES AND 3/4" SOLID STEEL INTERIOR GLAZING STOPS.
- B. PAINT- A RUST INHIBITIVE HIGH BUILD PRIMER WITH AN POLYURETHANE INDUSTRIAL FINISH.
- C. ELECTRICAL- ALL WIRING BY PAR-KUT TO BE #12(MIN) STRANDED COPPER, THHN ENCLOSED IN 1/2"(MIN) E.M.T. PER NATIONAL ELECTRIC CODE. FITTINGS, FIXTURES & DEVICES ARE U.L. LABELED. ALL WIRING TO TERMINATE AT C.B. PANEL. ALL CIRCUITS HAVE GREEN GROUND WIRE.
- D. BOOTH WILL HAVE A 3" CANOPY OVERHANG ON ALL SIDES.
- E. LIFTING RING(S) ARE PROVIDED IN ROOF.
- F. NO ON SITE WORK BY PAR-KUT.
- G. EXTERIOR PLATE AND GLAZING SHALL MEET U.L. 752 BULLET RESISTING LEVEL 8 CLASSIFICATION.

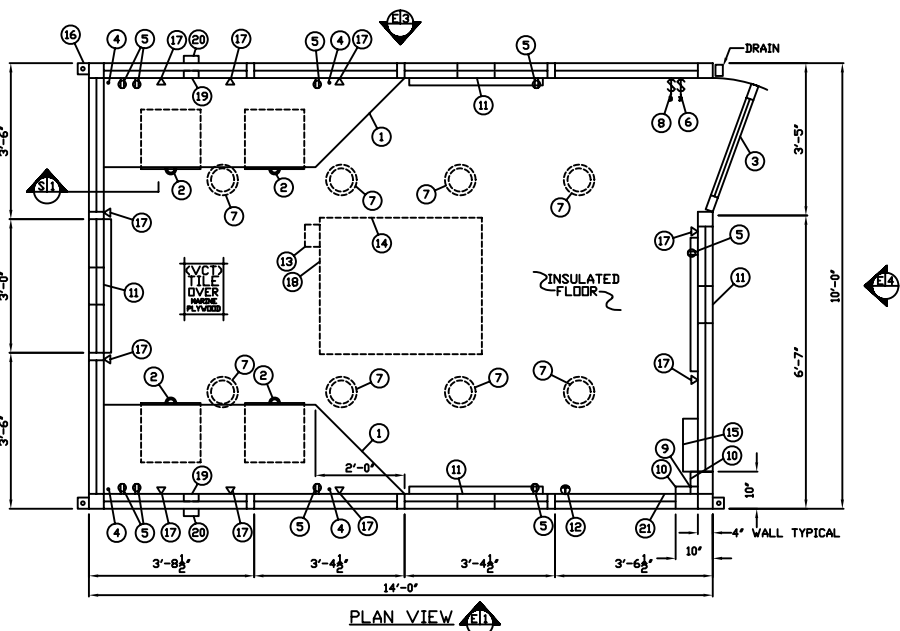


SCALE BAR
NOTE: ELEVATIONS 21

NOTE: FLOOR, CANOPY, FASCIA, SOFFIT, AND HVAC UNIT ARE NOT BULLET RESISTING.

NOTE: THIS PRINT AND DESIGN ARE THE PROPERTY OF PAR-KUT INTERNATIONAL, INC. IT MUST NOT BE REPRODUCED IN ANY MANNER, NOR SHALL IT BE SUBMITTED TO OUTSIDE PARTIES FOR EXAMINATION WITHOUT OUR CONSENT. IT SHALL BE USED ONLY AS A MEANS OF REFERENCE TO WORK ORDERED AND FURNISHED BY PAR-KUT. PAR-KUT RESERVES THE RIGHT TO MAKE CHANGES TO DESIGN FOR ENGINEERING PURPOSES WITHOUT NOTICE. REVISIONS MAY NOT BE NOTED.

PAR-KUT INTERNATIONAL, INC.
40981 Production Drive
Harrison Twp., Mich.
48049-1991
PH. (616) 468-2947



PLAN VIEW

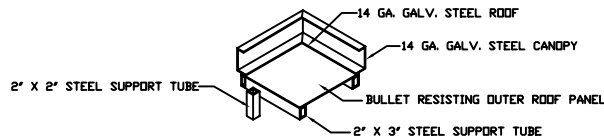
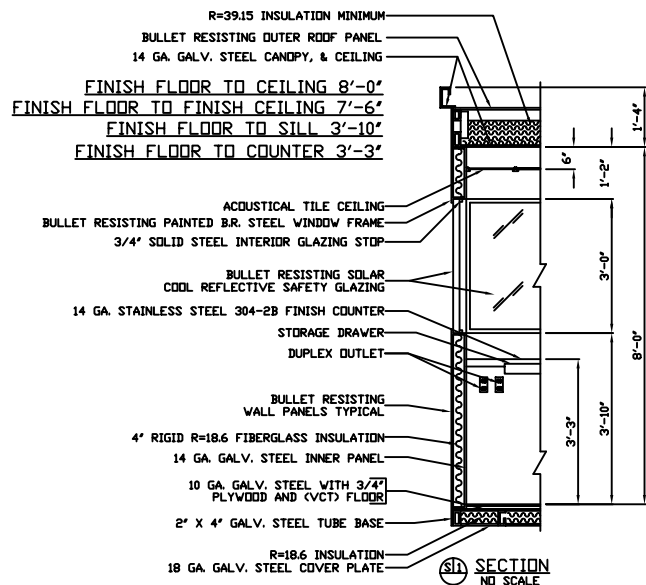
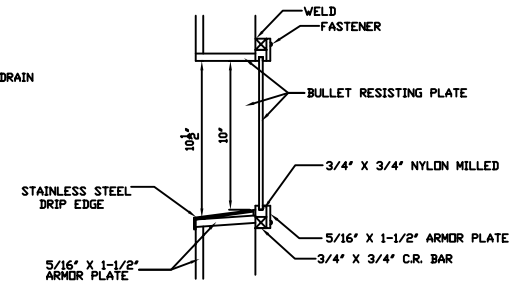
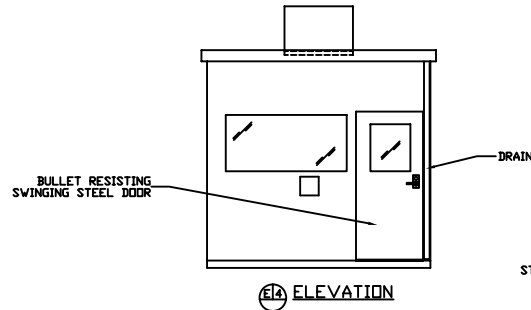
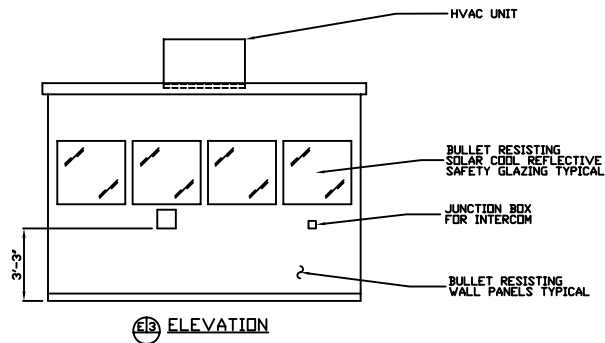
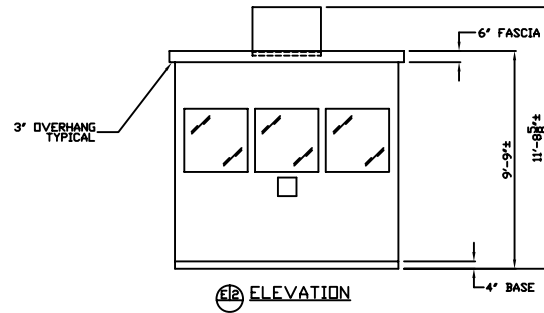
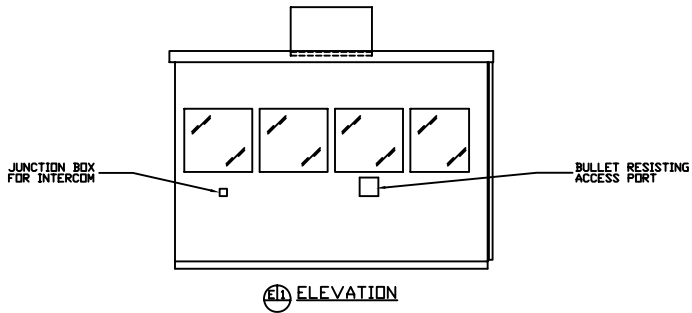
* FIELD WORK

- * CONCRETE FOUNDATION
- * ANCHORING UNIT IN PLACE
- * ELECTRICAL CONNECTION TO SERVICE PANEL
- * GROUNDING ELECTRODE
- * ANCHOR BOLTS
- * INSTALLATION OF ALL PLUMBING PIPE, FITTING AND FIXTURES
- * PIPE & FITTING PROVIDE BY OTHERS

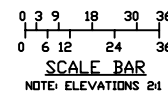
A/E NOTES

PAINT COLOR: WHITE

DWG#	SEC-004	SHEET	A-1
SEC-004			
FOR SCALE	NTS	DRAWN BY	REVISED
DATE	6-7-2002	AJP	7-1-2002
CHK'D BY:		SIZE	10' X 14'
		QTY	1
		SALES REPRESENTATIVE	TOM DUEMLING



NOTE: FLOOR, CANOPY, FASCIA, SOFFIT, AND HVAC UNIT ARE NOT BULLET RESISTING.



- * FIELD WORK**
- * CONCRETE FOUNDATION
 - * ANCHERING UNIT IN PLACE
 - * ELECTRICAL CONNECTION TO SERVICE PANEL
 - * GROUNDING ELECTRODE
 - * ANCHOR BOLTS
 - * INSTALLATION OF ALL PLUMBING PIPE, FITTING AND FIXTURES
 - * PIPE & FITTING PROVIDE BY OTHERS

NOTE: THIS PRINT AND DESIGN ARE THE PROPERTY OF PARK-KUT INTERNATIONAL, INC. IT MUST NOT BE REPRODUCED IN ANY MANNER, NOR SHALL IT BE SUBMITTED TO OUTSIDE PARTIES FOR EXAMINATION WITHOUT OUR CONSENT. IT SHALL BE USED ONLY AS A MEANS OF REFERENCE TO WORK DESIGNED AND FURNISHED BY PARK-KUT. PARK-KUT RESERVES THE RIGHT TO MAKE CHANGES TO DESIGN FOR ENGINEERING PURPOSES WITHOUT NOTICE. REVISIONS MAY NOT BE NOTED.

PARK-KUT INTERNATIONAL, INC.
40961 Production Drive
Harrison Twp., Mich.
48045-1551
PKC (EO) 468-2947



DWG# SEC-004 SHEET A-2

SEC-004

SCALE	NTS	DRAWN BY	AJP	REVISED	7-1-2002
DATE	6-7-2002	SIZE	10' X 14'	QTY	1
CHK'D BY:		SALES REPRESENTATIVE	TOM DUEHLING		