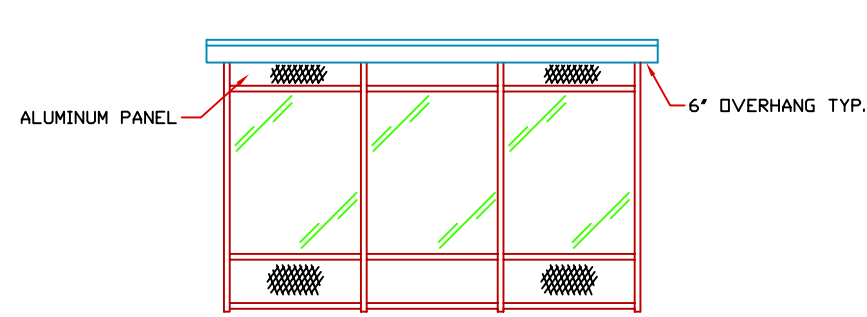
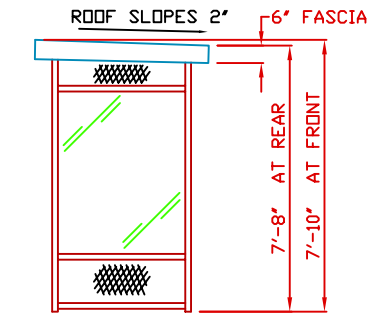


E1 ELEVATION

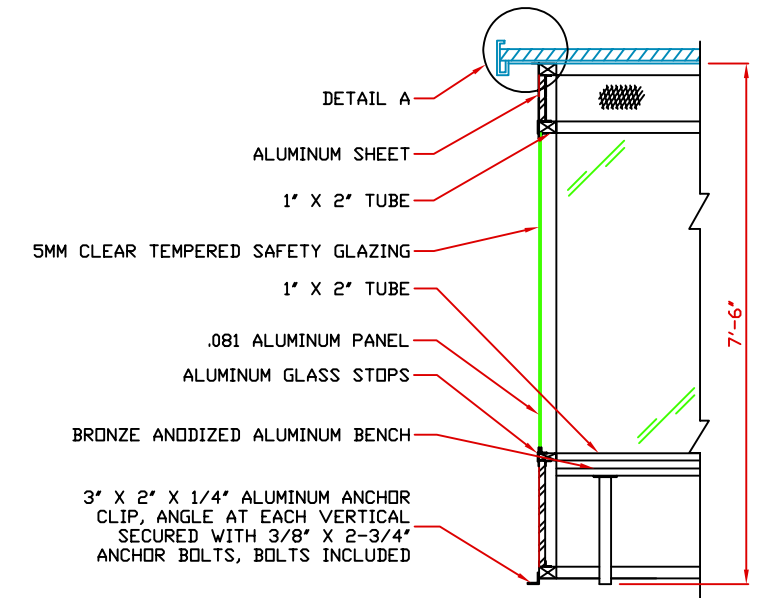
E2 ELEVATION



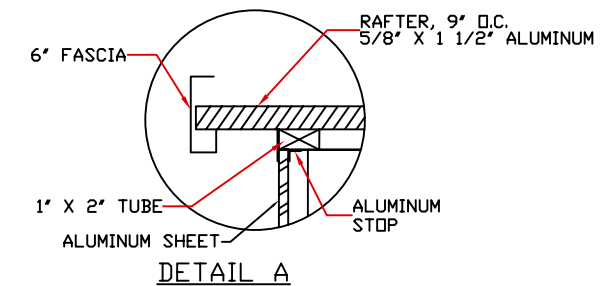
E3 ELEVATION



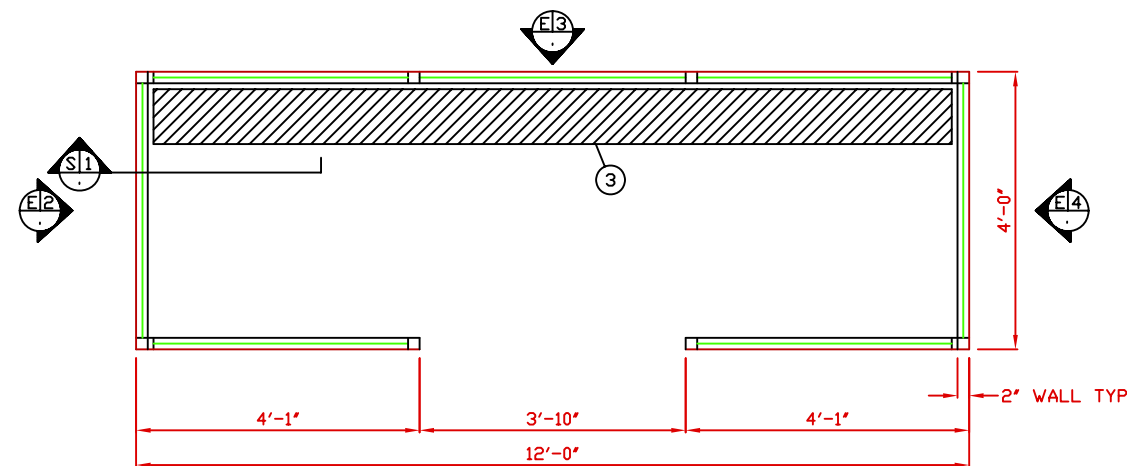
E4 ELEVATION



S1 SECTION
NO SCALE

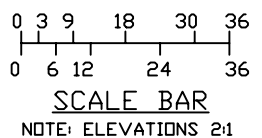


DETAIL A



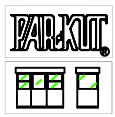
E1 PLAN VIEW

1. ROOF TO BE FIBERGLASS.
2. STRUCTUAL UPRIGHTS AND CROSS MEMBERS TO BE CLEAR ANODIZED ALUMINUM.
3. 9-1/2" DEEP ALUMINUM BENCH MOUNTED 20" FROM GRADE



NOTE: THIS PRINT AND DESIGN ARE THE PROPERTY OF PAR-KUT INTERNATIONAL, INC. IT MUST NOT BE REPRODUCED IN ANY MANNER, NOR SHALL IT BE SUBMITTED TO OUTSIDE PARTIES FOR EXAMINATION WITHOUT OUR CONSENT. IT SHALL BE USED ONLY AS A MEANS OF REFERENCE TO WORK DESIGNED AND FURNISHED BY PAR-KUT. PAR-KUT RESERVES THE RIGHT TO MAKE CHANGES TO DESIGN FOR ENGINEERING PURPOSES WITHOUT NOTICE. REVISIONS MAY NOT BE NOTED.

PAR-KUT INTERNATIONAL, INC.
40961 Production Drive
Harrison Twp, Mich.
48045-1351
PH. (586) 468-2947



DWG# SHEET A-1

GENERAL NOTES

PD#	SCALE	DRAWN BY	REVISED
	NTS	NSG	
DATE	SIZE	QTY	
6-27-2005	4' X 12'	1	
CHK'D BY:	SALES REPRESENTATIVE BRIAN KENNY		