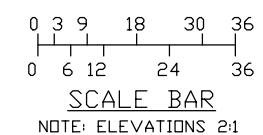


1. COUNTER- 16" DEEP PAINTED GALVANIZED STEEL WITH 1" OF AIR SPACE BETWEEN WALL AND 36" FROM BOTTOM OF BASE.
2. DUTCH DOOR- 36" WIDE, IN-SWINGING STEEL WITH SPRING HINGES AND HARDWARE.
3. GRIP STRUT STEPS, 9-REQ'D.
4. OPEN STEEL SMOOTH FLOOR GRATING.
5. 1" X 2" STEEL SAFETY RAIL.
6. 8" X 8" X 3/8" ANCHOR PLATE WITH 3/4" ANCHOR BOLT HOLES.

NOTE: PAR-KUT BOOTHS ARE OF SINGLE UNIT WELDED GALVANIZED STEEL CONSTRUCTION, FACTORY ASSEMBLED AND DELIVERED SET UP. FAILURE TO SECURELY ANCHOR BOOTH, STAND, STEPS & PORCH MAY RESULT IN OVERTURNING OF UNIT AND SERIOUS INJURY TO OCCUPANT. BOOTH, STAND, STEPS, & PORCH ARE SHIPPED AS (3) SEPARATE UNITS. STAND, PORCH, & STEPS ARE TO BE ANCHORED AND BOOTH SET ATOP BY OTHERS. BOLTS TO FASTEN BOOTH TO STAND & PORCH ARE INCLUDED. BOLTS FOR ANCHORING STAND, PORCH, & STEPS TO FOUNDATION OR FOOTINGS BY OTHERS. NO ON SITE WORK BE PAR-KUT.

- A. NO GLAZING IS PROVIDED IN THIS BOOTH.
- B. PAINT- A RUST INHIBITIVE PRIMER WITH INDUSTRIAL FINISH.
- C. NO ELECTRIC OR ELECTRICAL DEVICES WILL BE PROVIDED.
- D. BOOTH WILL HAVE A 6" CANOPY OVERHANG ON ALL SIDES.
- E. LIFTING RING(S) ARE PROVIDED IN ROOF.
- F. NO ON SITE WORK BY PAR-KUT.

DRAWING IS AS FABRICATED
FOR RECORD PURPOSES ONLY



NOTE: THIS PRINT AND DESIGN ARE THE PROPERTY OF PAR-KUT INTERNATIONAL, INC. IT MUST NOT BE REPRODUCED IN ANY MANNER, NOR SHALL IT BE SUBMITTED TO OUTSIDE PARTIES FOR EXAMINATION WITHOUT OUR CONSENT. IT SHALL BE USED ONLY AS A MEANS OF REFERENCE TO WORK DESIGNED AND FURNISHED BY PAR-KUT. PAR-KUT RESERVES THE RIGHT TO MAKE CHANGES TO DESIGN FOR ENGINEERING PURPOSES WITHOUT NOTICE. REVISIONS MAY NOT BE NOTED.

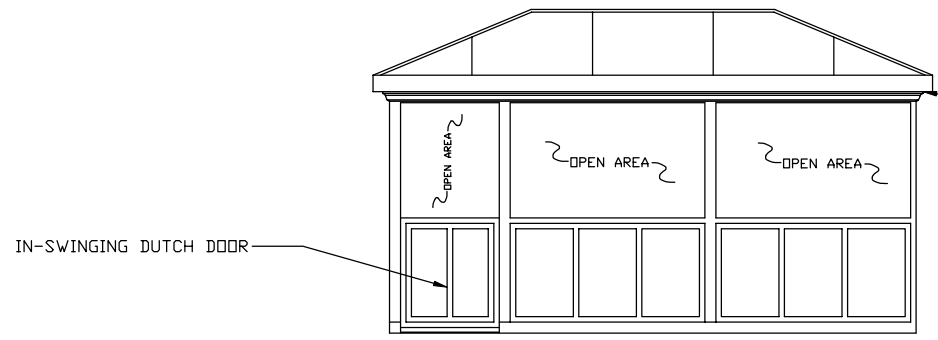
PAR-KUT INTERNATIONAL, INC.
40961 Production Drive
Harrison Twp, Mich.
48045-1351
PH. (810) 468-2947



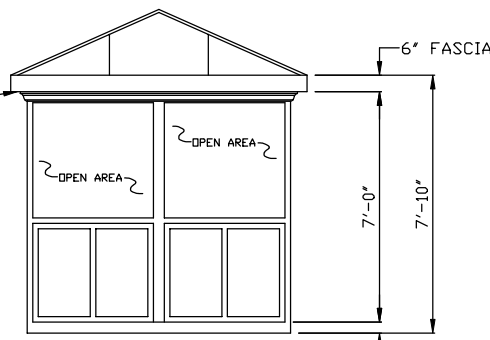
DWG# 2K246-47 SHEET A-1

DELAWARE PARK RACETRACK WILMINGTON, DE		
SCALE NTS	DRAWN BY AJP	REVISED 4-7-00 DLT
DATE 3-7-2000	SIZE 8' X 16'	QTY 2
CHK'D BY:	SALES REPRESENTATIVE JIM SMITH	

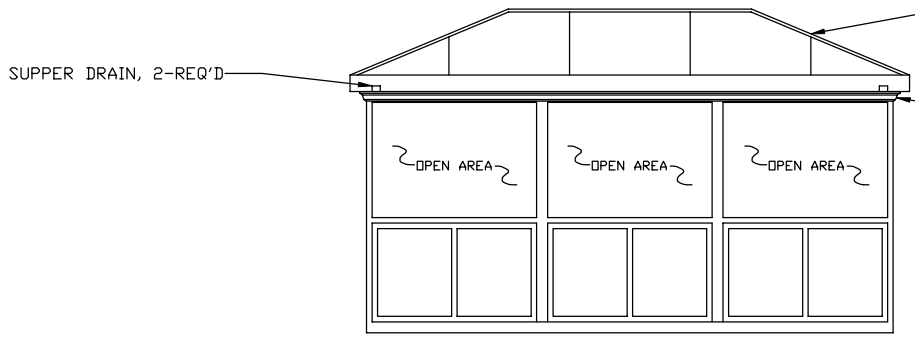
A/E NOTES	
BOOTH COLOR: WHITE	
ROOF, CANOPY, & FASCIA COLOR: GREEN PAN TONE 343C	
STAND, STEPS, & PORCH COLOR: BLACK	



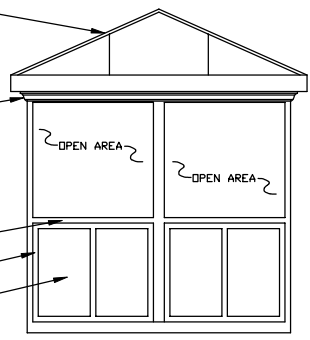
E1 ELEVATION
STAND NOT SHOWN
FOR CLARITY



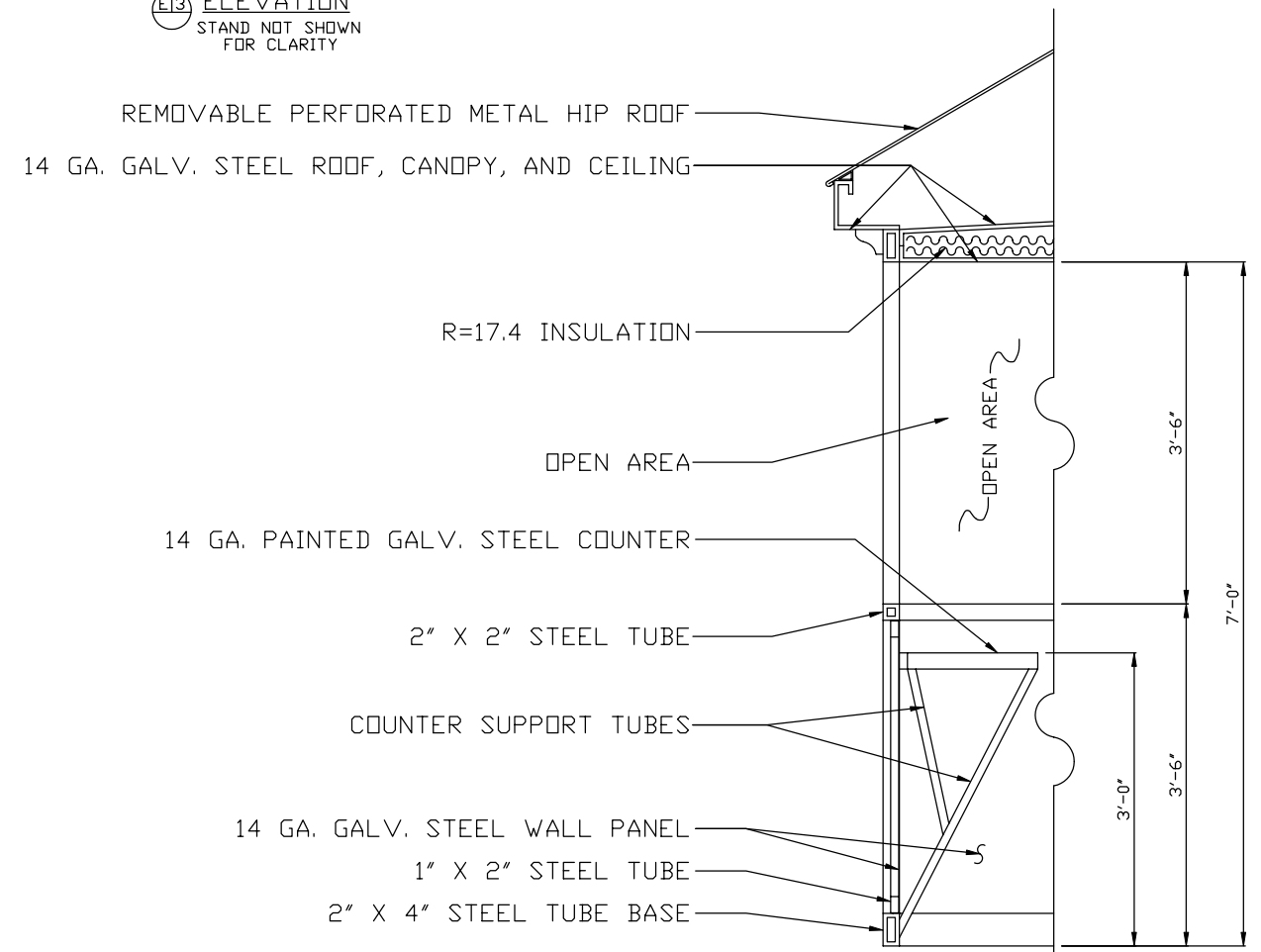
E2 ELEVATION
STAND NOT SHOWN
FOR CLARITY



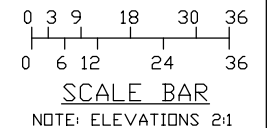
E3 ELEVATION
STAND NOT SHOWN
FOR CLARITY



E4 ELEVATION
STAND NOT SHOWN
FOR CLARITY



S1 SECTION
NO SCALE
STAND NOT SHOWN
FOR CLARITY



NOTE: THIS PRINT AND DESIGN ARE THE PROPERTY OF PAR-KUT INTERNATIONAL, INC. IT MUST NOT BE REPRODUCED IN ANY MANNER, NOR SHALL IT BE SUBMITTED TO OUTSIDE PARTIES FOR EXAMINATION WITHOUT OUR CONSENT. IT SHALL BE USED ONLY AS A MEANS OF REFERENCE TO WORK DESIGNED AND FURNISHED BY PAR-KUT. PAR-KUT RESERVES THE RIGHT TO MAKE CHANGES TO DESIGN FOR ENGINEERING PURPOSES WITHOUT NOTICE. REVISIONS MAY NOT BE NOTED.

PAR-KUT INTERNATIONAL, INC.
40961 Production Drive
Harrison Twp, Mich.
48045-1351
PH. (810) 468-2947



DWG# 2K246-47 SHEET A-2

DELAWARE PARK
RACETRACK
WILMINGTON, DE

SCALE NTS	DRAWN BY AJP	REVISED 4-7-00 DLT
DATE 3-7-2000	SIZE 8' X 16'	QTY 2
CHK'D BY:	SALES REPRESENTATIVE JIM SMITH	

DRAWING IS AS FABRICATED
FOR RECORD PURPOSES ONLY