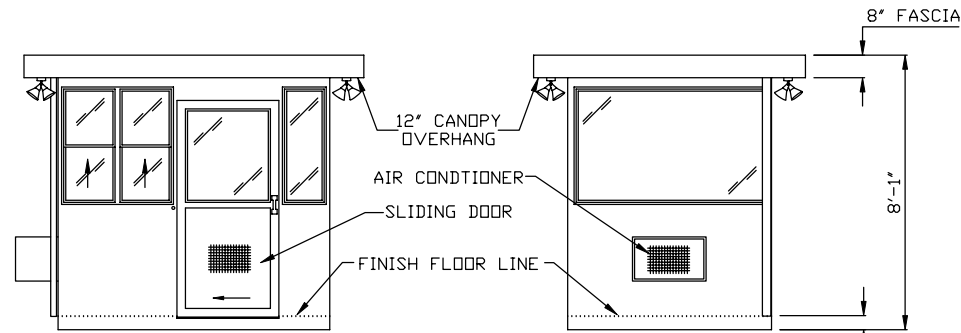


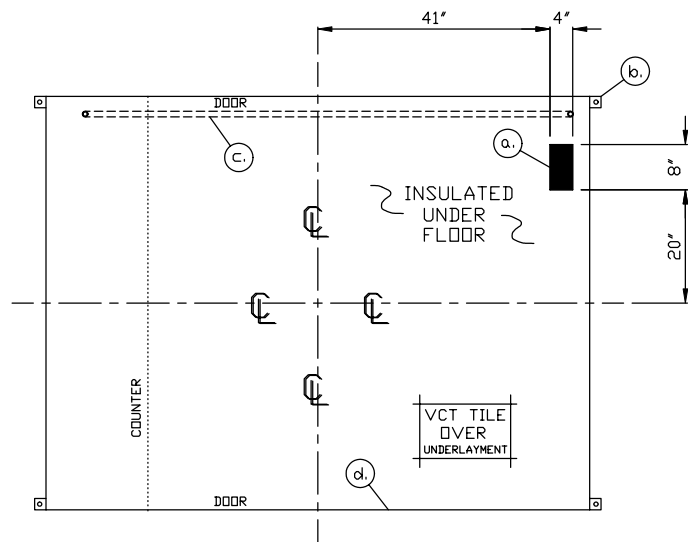
E1 ELEVATION

E2 ELEVATION



E3 ELEVATION

E4 ELEVATION



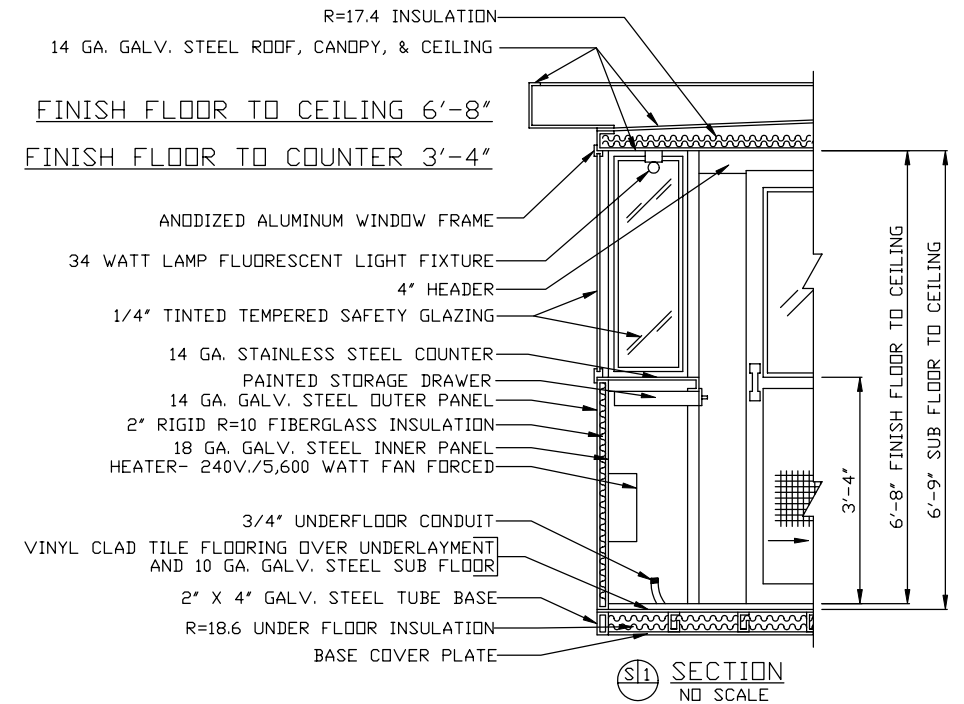
NOTE: PROVIDE 120/240V. 1Ø-3 WIRE SERVICE WITH GROUND. SERVICE ENTRANCE/ANCHOR BOLT LAYOUT

- a. SLOT IN FLOOR FOR ELECTRICAL SERVICE ENTRANCE TO C.B. PANEL ABOVE
- b. 2" X 2" X 1/4" MIN. ANCHOR CLIP WITH 3/4" ANCHOR BOLT HOLE, 4-REQ'D. ONE EACH CORNER. ANCHOR BOLT AFTER FINAL LOCATION. ANCHOR BOLTS NOT INCLUDED
- c. 3/4" RIGID CONDUIT RACEWAY IN BASE STUBBED ABOVE FLOOR AT EACH END UNDER COUNTER AND NEAR C.B. PANEL.
- d. OUTER EDGE OF BASE

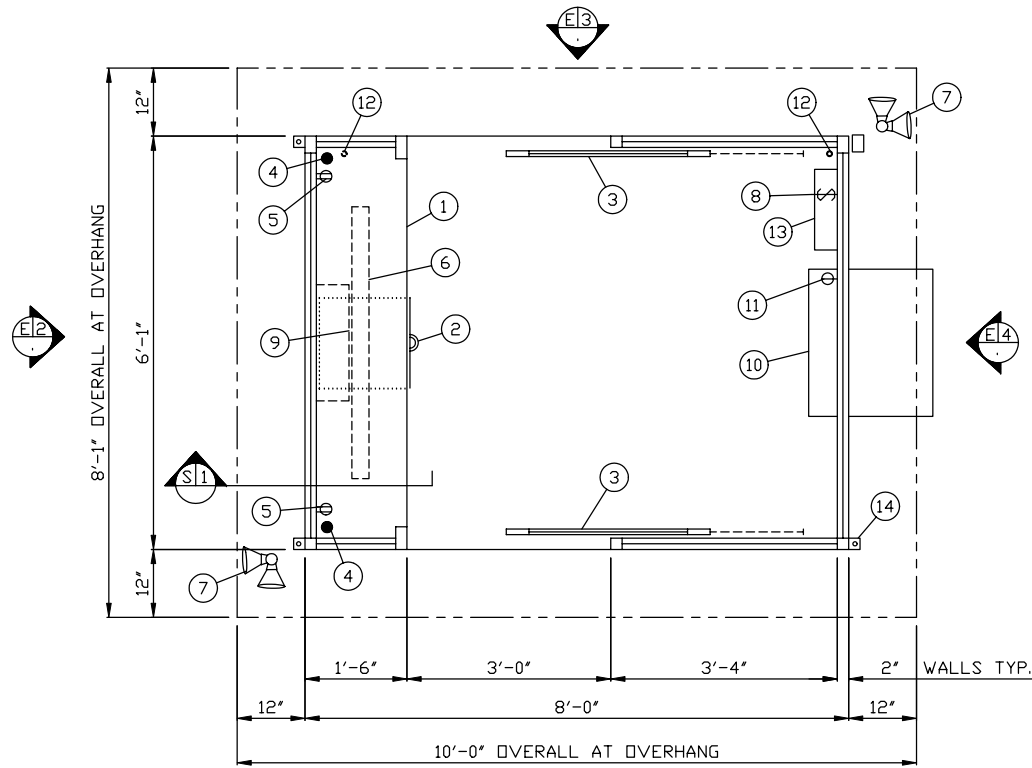
1. COUNTER- 18" DEEP 304-2B STAINLESS STEEL MOUNTED 40" ABOVE FINISH FLOOR.
2. PAINTED STORAGE DRAWER BENEATH COUNTER.
3. DOOR- 36" WIDE, SLIDING ALUMINUM WITH WEATHER-STRIPPING, BALL BEARING HANGERS, SAFETY GLAZING, HEAVY DUTY TRACK, LOCK, & HARDWARE, 2-REQ'D.
4. HOLE IN COUNTER FOR DROP CORDS, 2-REQ'D.
5. GFCI DUPLEX RECEPTACLES- MOUNTED BELOW COUNTER, 2-REQ'D.
6. LIGHT- 1 LAMP 34 WATT FLUORESCENT LIGHT FIXTURE WITH SWITCH ATTACHED.
7. DUPLEX FLOOD LIGHT WITH 75 WATT LAMPS, 2-REQ'D.
8. LIGHT SWITCH FOR EXTERIOR FLOOD LIGHTS.
9. HEATER- 240V./5,600 WATT FAN FORCED WITH INTEGRAL THERMOSTAT CONTROL.
10. AIR CONDITIONER- 120V./8,000 BTU COOL ONLY WITH INTEGRAL THERMOSTAT CONTROL.
11. SINGLE RECEPTACLE FOR AIR CONDITIONER.
12. 3/4" RIGID CONDUIT UNDER FLOOR STUBBED ABOVE FLOOR AT EACH END.
13. C.B. PANEL- 12 SPACE 120/240V. 1Ø-3 WIRE WITH GROUND BAR. 100 AMP MAIN BREAKER IS INCLUDED.
14. ANCHOR CLIP- 2" X 2" X 1/4" MIN. STEEL WELDED TO BASE AT GRADE WITH 3/4" ANCHOR BOLT HOLE. 4-REQ'D. ANCHOR BOLT AFTER FINAL LOCATION. ANCHOR BOLTS NOT INCLUDED.

NOTE: PAR-KUT BOOTHS ARE OF SINGLE UNIT WELDED GALVANIZED STEEL CONSTRUCTION, FACTORY ASSEMBLED AND DELIVERED SET UP. FAILURE TO SECURELY ANCHOR BOOTH MAY RESULT IN OVERTURNING OF UNIT AND SERIOUS INJURY TO OCCUPANT.

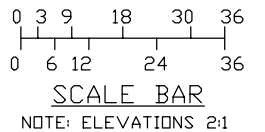
- A. GLAZING TO BE 1/4" TINTED TEMPERED SAFETY GLAZING SET IN ANODIZED ALUMINUM WINDOW FRAMES. OPERATING WINDOWS WILL BE PROVIDED WITH INSECT SCREENS.
- B. PAINT- A RUST INHIBITIVE PRIMER WITH AN INDUSTRIAL FINISH.
- C. ELECTRICAL- ALL WIRING BY PAR-KUT TO BE #12(MIN) STRANDED COPPER, THHN ENCLOSED IN 1/2"(MIN) E.M.T. PER NATIONAL ELECTRIC CODE. FITTINGS, FIXTURES & DEVICES ARE U.L. LABELED. ALL WIRING TO TERMINATE AT C.B. PANEL. ALL CIRCUITS HAVE GREEN GROUND WIRE.
- D. BOOTH WILL HAVE A 12" CANOPY OVERHANG ON ALL SIDES.
- E. LIFTING RING(S) ARE PROVIDED IN ROOF.
- F. NO ON SITE WORK BY PAR-KUT.



S1 SECTION
NO SCALE



E1 PLAN VIEW



GENERAL NOTES
 PAINT COLOR: MIST GRAY #DC2301
 GLAZING TINT COLOR: GRAY
 VINYL CLAD TILE COLOR: COMPLEMENTARY COLOR

NOTE: THIS PRINT AND DESIGN ARE THE PROPERTY OF PAR-KUT INTERNATIONAL, INC. IT MUST NOT BE REPRODUCED IN ANY MANNER, NOR SHALL IT BE SUBMITTED TO OUTSIDE PARTIES FOR EXAMINATION WITHOUT OUR CONSENT. IT SHALL BE USED ONLY AS A MEANS OF REFERENCE TO WORK DESIGNED AND FURNISHED BY PAR-KUT. PAR-KUT RESERVES THE RIGHT TO MAKE CHANGES TO DESIGN FOR ENGINEERING PURPOSES WITHOUT NOTICE. REVISIONS MAY NOT BE NOTED.

PAR-KUT INTERNATIONAL, INC.
 40961 Production Drive
 Harrison Twp, Mich.
 48045-1351
 PH. (586) 468-2947



DWG# 03-106 SHEET A-1

A. J. WRIGHT
 LAUTH PROPERTY GROUP
 SOUTH BEND, IN

PK# VERBAL
 SCALE NTS
 DATE 2-5-2003
 CHK'D BY:
 DRAWN BY DNE
 REVISED 2-20-2003
 SIZE 6'-1" X 8'
 QTY 1
 SALES REPRESENTATIVE JIM SMITH

DESIGN NOTES	CODE REFERENCES
1.) REQUIRED PLUMBING FACILITIES TO BE PROVIDED ON SITE BY OTHERS.	DESIGN CODES: 2002 INDIANA BUILDING CODE 2002 INDIANA MECHANICAL CODE 2002 INDIANA ELECTRICAL
2.) THIS STRUCTURE DOES NOT MEET THE DEFINITION OF A COMMERCIAL BUILDING AS DEFINED BY INDIANA CHAPTER 31 SECTION 1.3 OR ADA SECTION 1, AND HAS NOT BEEN DESIGNED FOR USE BY INDIVIDUALS WITH DISABILITIES.	DESIGN LOADS: ROOF LIVE LOAD - 30 PSF FLOOR LIVE LOAD - 50 PSF WIND LOAD - 80 MPH DESIGN CRITERIA: USE GROUP - B-2 CONSTRUCTION TYPE - V-N OCCUPANT LOAD - 1