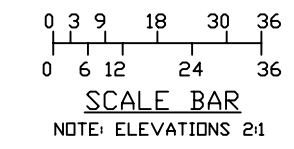
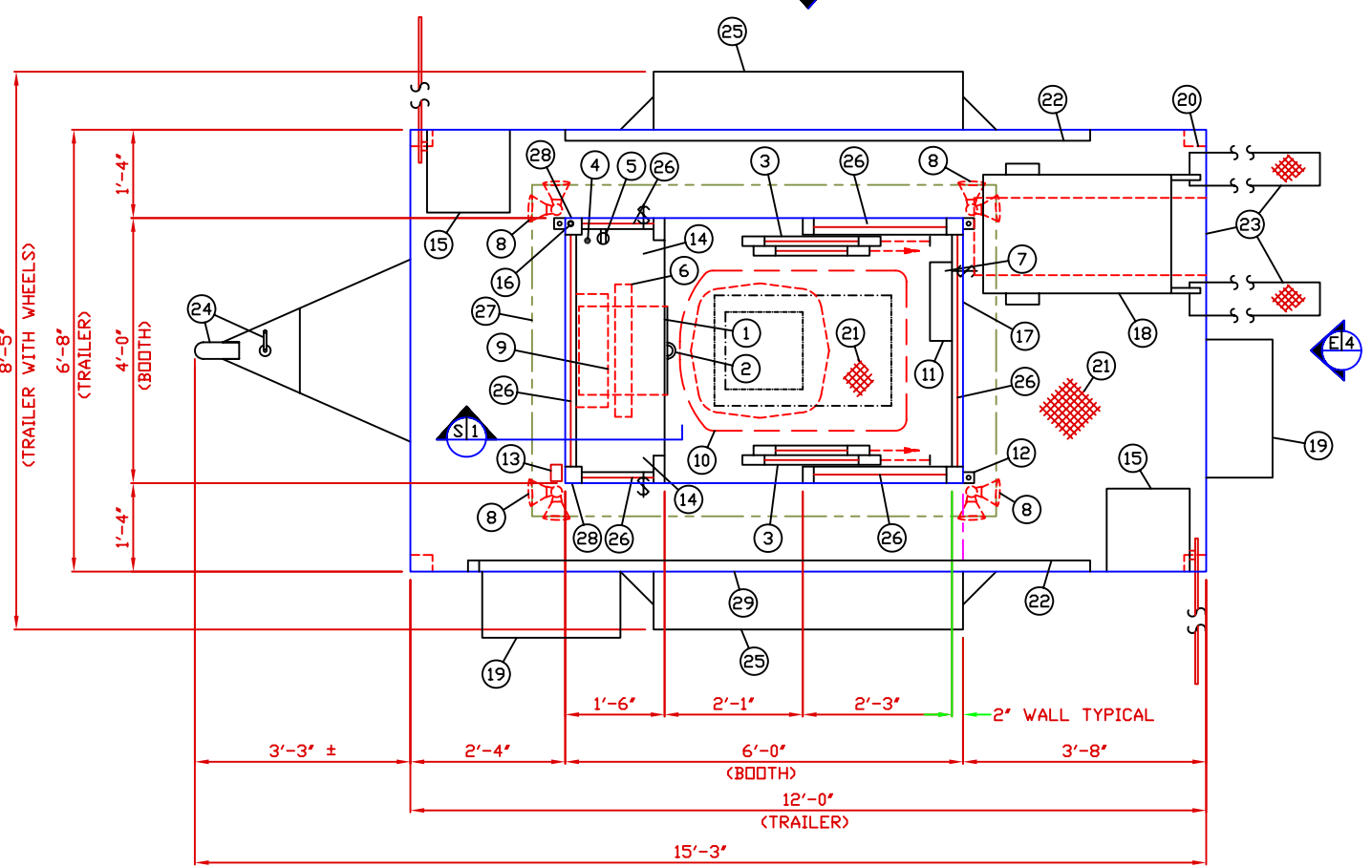


**NOTICE:** MAXIMUM SAFE TOWING SPEED -- 45 MPH  
 IT IS UNLAWFUL TO CARRY PASSENGERS ON TRAILER OR IN BOOTH WHILE IN TRANSIT.  
 GATE CONTROL ARMS NEED TO BE REMOVED WHILE IN TRANSIT.

1. COUNTER- 18" DEEP PAINTED GALVANIZED STEEL.
2. PAINTED STORAGE DRAWER BENEATH COUNTER.
3. DOOR- 25" WIDE, SLIDING STEEL WITH WEATHER-STRIPPING, BALL BEARING HANGERS, DOUBLE ACTION CASHIER WINDOW WITH INSIDE LOCK, HEAVY DUTY TRACK, HOOK BOLT LOCK, & HARDWARE, 2-REQ'D.
4. 1-1/4" HOLE IN COUNTER FOR DROP CORDS TO OUTLET.
5. DUPLEX OUTLET- MOUNTED BELOW COUNTER.
6. LIGHT- 20 WATT LAMP FLUORESCENT LIGHT FIXTURE WITH SWITCH ATTACHED.
7. LIGHT SWITCH FOR EXTERIOR FLOOD LIGHTS.
8. EXTERIOR FLOOD LIGHT MOUNTED TO SOFFIT WITH 75 WATT LAMPS, 4-REQ'D.
9. HEATER- 240V./5,600 WATT FAN FORCED WITH INTEGRAL THERMOSTAT CONTROL.
10. AIR CONDITIONER- 120V./13,500 BTU ROOF MOUNTED WITH INTEGRAL THERMOSTAT CONTROL.
11. C.B. PANEL- 12 SPACE 120/240V. 1Ø-3 WIRE WITH GROUND BAR. 100 AMP MAIN BREAKER IS INCLUDED.
12. ANCHOR CLIP- 2" X 2" STEEL WELDED TO BASE AT GRADE WITH 3/4" ANCHOR BOLT HOLE. 4-REQ'D. ANCHOR BOOTH AFTER FINAL LOCATION. ANCHOR BOLTS NOT INCLUDED.
13. DRAIN DOWN SPOUT.
14. SWITCH MOUNTED BELOW COUNTER WITH 3/4" CONDUIT FOR PARKING BARRIER GATE CONTROL, 2-REQ'D.
15. FEDERAL PARKING BARRIER GATE MODEL G-89 WITH 1" POWER CONDUIT FROM CB PANEL, 2-REQ'D.
16. JUNCTION BOX MOUNTED BELOW COUNTER WITH 3/4" RACEWAY TO STUB THROUGH ROOF FOR FUTURE ANTENNA.
17. 20 FOOT POWER CORD WITH MALE PLUG.
18. GASOLINE POWERED GENERATOR- 6,500 RATED WATTS WITH WHEELS AND HANDLES.
19. GRIP STRUT FOLD DOWN STEP, 2-REQ'D.
20. LEVELING JACK, 4-REQ'D.
21. 12 GA. GALV. 4-WAY DIAMOND PLATE STEEL TRAILER BED AND BOOTH FLOOR.
22. 2" X 2" SAFETY RAILS.
23. WHEEL RAMPS MOUNTED AND STORED BELOW TRAILER FOR REMOVAL OF GENERATOR.
24. 2" BALL COUPLER, SAFETY CHAINS, AND TONGUE JACK.
25. 10" TIRES AND TANDEM AXLES.
26. PULL DOWN TINTED WINDOW SHADES, 6-REQ'D.
27. 3' X 6' FOLD DOWN SIGN.
28. 12" CONVEX CIRCULAR MIRROR MOUNTED AT FRONT CORNERS OF BOOTH, 2-REQ'D.
29. SLIDING PORTION OF SAFETY HAND RAIL.



**NOTE:** PAR-KUT BOOTHS ARE OF SINGLE UNIT WELDED GALVANIZED STEEL CONSTRUCTION, FACTORY ASSEMBLED AND DELIVERED SET UP. FAILURE TO SECURELY ANCHOR BOOTH MAY RESULT IN OVERTURNING OF UNIT AND SERIOUS INJURY TO OCCUPANT. TRAILER WILL BE EQUIPPED WITH ALL THE NECESSARY EQUIPMENT SUCH AS RUNNING LIGHTS, BREAK LIGHTS, LEVELING JACKS, AND ELECTRIC BREAKS.

- A. GLAZING TO BE CLEAR TEMPERED SAFETY GLAZING SET IN MILL FINISH ALUMINUM WINDOW FRAMES. OPERATING WINDOWS WILL BE PROVIDED WITH INSECT SCREENS EXCEPT FOR CASHIER WINDOWS.
- B. PAINT- A RUST INHIBITIVE PRIMER WITH AN INDUSTRIAL FINISH.
- C. ELECTRICAL- ALL WIRING BY PAR-KUT TO BE #12(MIN) STRANDED COPPER, THHN ENCLOSED IN 1/2"(MIN) E.M.T. PER NATIONAL ELECTRIC CODE. FITTINGS, FIXTURES & DEVICES ARE U.L. LABELED. ALL WIRING TO TERMINATE AT C.B. PANEL. ALL CIRCUITS HAVE GREEN GROUND WIRE.
- D. BOOTH WILL HAVE A 6" CANOPY OVERHANG ON ALL SIDES.
- E. LIFTING RING(S) ARE PROVIDED IN ROOF.
- F. NO ON SITE WORK BY PAR-KUT.

**NOTE:** THIS PRINT AND DESIGN ARE THE PROPERTY OF PAR-KUT INTERNATIONAL, INC. IT MUST NOT BE REPRODUCED IN ANY MANNER, NOR SHALL IT BE SUBMITTED TO OUTSIDE PARTIES FOR EXAMINATION WITHOUT OUR CONSENT. IT SHALL BE USED ONLY AS A MEANS OF REFERENCE TO WORK DESIGNED AND FURNISHED BY PAR-KUT. PAR-KUT RESERVES THE RIGHT TO MAKE CHANGES TO DESIGN FOR ENGINEERING PURPOSES WITHOUT NOTICE. REVISIONS MAY NOT BE NOTED.

PAR-KUT INTERNATIONAL, INC.  
 40961 Production Drive  
 Harrison Twp, Mich.  
 48049-1351  
 PH. (586) 468-2947

DWG#	STD-005	SHEET	A-1
4' X 6' TRAILER			
PAINT COLOR: (PLEASE SPECIFY COLOR)	SCALE NTS	DRAWN BY NSG	REVISED QTY
CHK'D BY:	DATE	SIZE	SALES REPRESENTATIVE

**GENERAL NOTES**